

Supplementary Material to the paper:

**On some species of African Ctenolepismatinae Escherich, 1905
(Zygentoma: Lepismatidae) preserved in the entomological collection
of the Museum für Naturkunde der Humboldt Universität (Berlin)**

By: Rafael Molero-Baltanás, Carmen Bach de Roca and Miquel Gaju-Ricart

Published in: Soil Organisms

This file includes figures that illustrate some characters of the species studied. These Figures consist of micrographs obtained with a camera attached to a light microscope or SEM photographs.

The quality of some of these images is not very Good because the not optimal preservation state of the samples maintained in the Museum during more than a century. Nevertheless, the characters observed are clear and relevant enough to support the descriptive remarks included in the main text of the article.

Index

- Figures S1 to S5: *Ctenolepisma madagascariense*
- Figures S6 to S18: *Sceletolepisma howa*
- Figures S19 and S20: *Sceletolepisma corvinum*
- Figures S21 to S26: *Sceletolepisma parcespinatum*
- Figures S27 to S35: *Sceletolepisma terebrans*
- Figures S36 to S40: *Psammolepisma schultzei*

Figure S1. *Ctenolepisma madagascariense*, femoral scale



60µm

Supplementary Material to: Molero-Baltanás, R., Bach de Roca, C., & Gaju-Ricart, M. (2026).

On some species of African Ctenolepismatinae Escherich, 1905 (Zygentoma: Lepismatidae) preserved in the entomological collection of the Museum für Naturkunde der Humboldt Universität (Berlin). *Soil Organisms*, 98(SI). <https://doi.org/10.25674/464>

Figure S2. *Ctenolepisma madagascariense*: base of antenna, eye, and cephalic trichobothrium. Scale: 0.1 mm



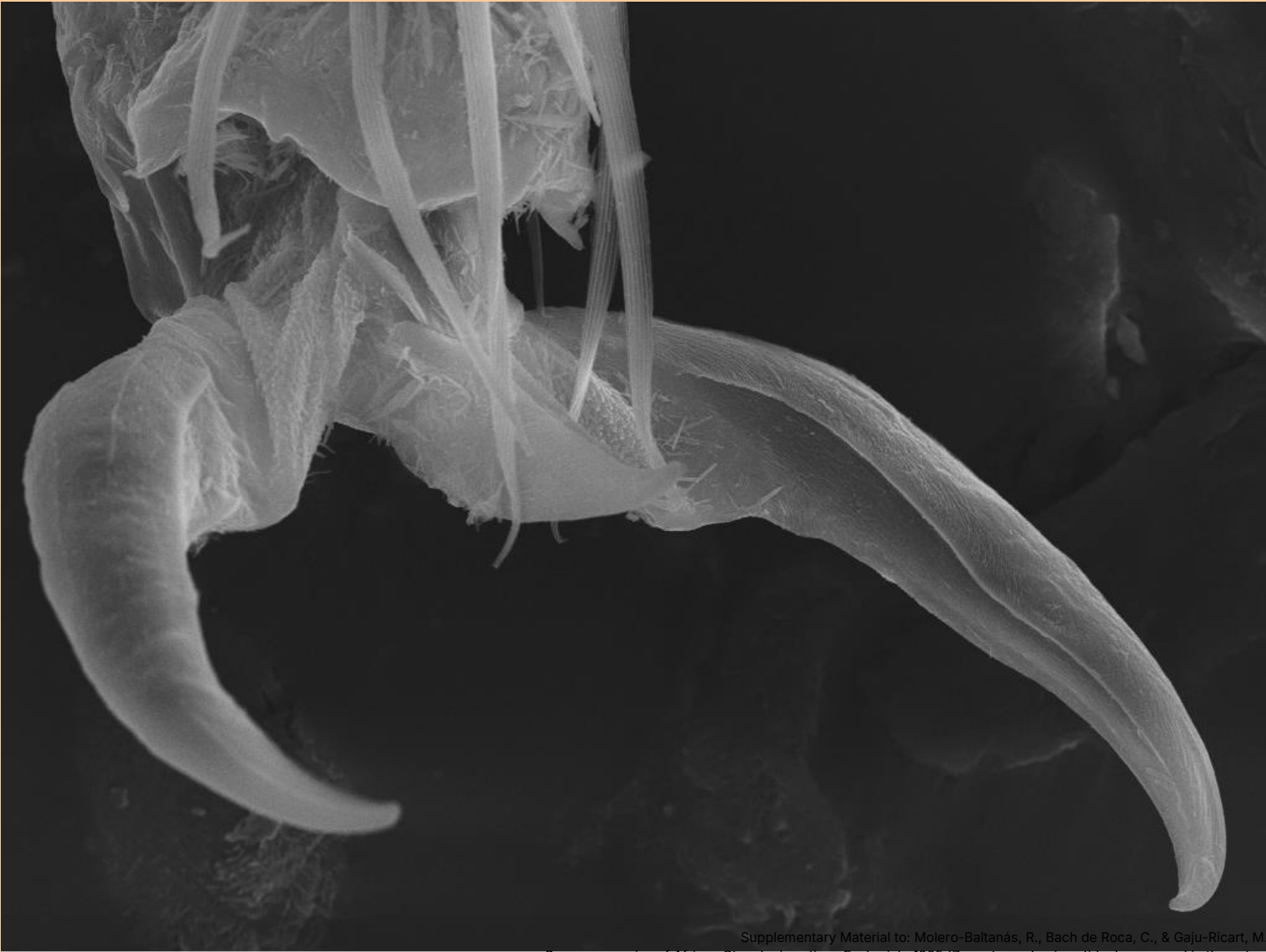
Figure S3. *Ctenolepisma madagascariense*, SEM image showing part of the apical article of the labial palp and 5 sensory papillae (considering the abundant dirt particles, the papillae are marked with arrows to allow their identification)



Figure S4. *Ctenolepisma madagascariense*, micrograph of the tibia and tarsus of the first leg. Scale: 0..2 mm



Figure S5. *Ctenolepisma madagascariense*, SEM image of the pretarsus



50µm

Supplementary Material to: Molero-Baltanás, R., Bach de Roca, C., & Gaju-Ricart, M. (2026). On some species of African Ctenolepismatinae Escherich, 1905 (Zygentoma: Lepismatidae) preserved in the entomological collection of the Museum für Naturkunde der Humboldt Universität (Berlin). Soil Organisms, 98(SI). <https://doi.org/10.25674/464>

Figure S6. *Sceletolepisma howa*, periocular chaetotaxy. The periocular group of insertions of macrochaetae is marked with an arrow. Scale: 0.1 mm



Figure S7. *Sceletolepisma howa*, posterior trichobothrium of the pronotum. The hair is marked with a yellow arrow and the comb associated (only insertions of macrochaetae) is marked with a red arrow. Scale: 0.1 mm



Figure S8. *Sceletopisma howa*, apical part of mesosternum showing the convex hind margin and the antedistal lateral combs of macrochaetae (only insertions). Scale: 0.1 mm

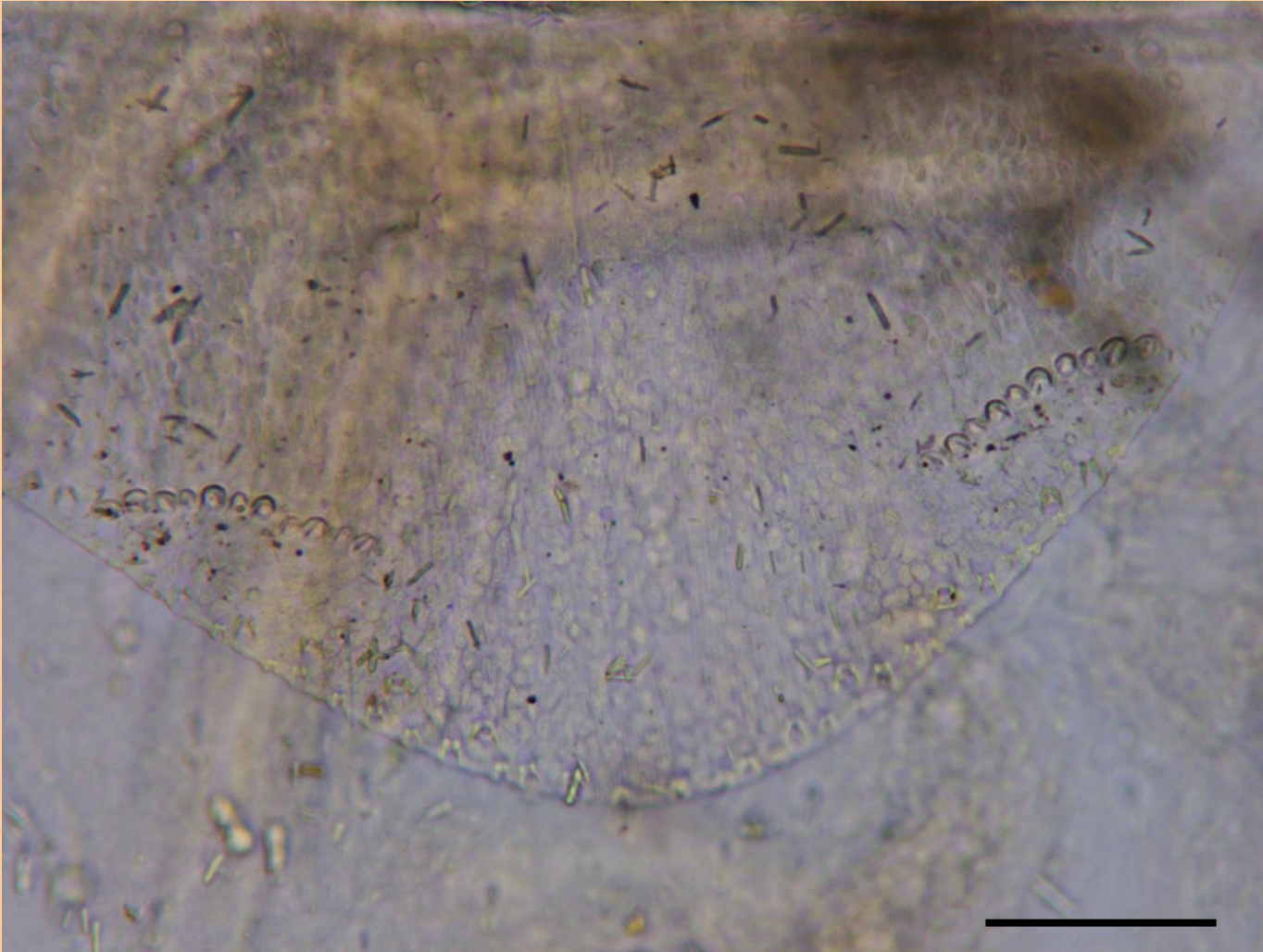


Figure S9. *Sceletolepisma howa*, apical part of metasternum showing the convex hind margin (slightly truncate apically) and the antedistal lateral combs of macrochaetae (only insertions). Scale: 0.1 mm

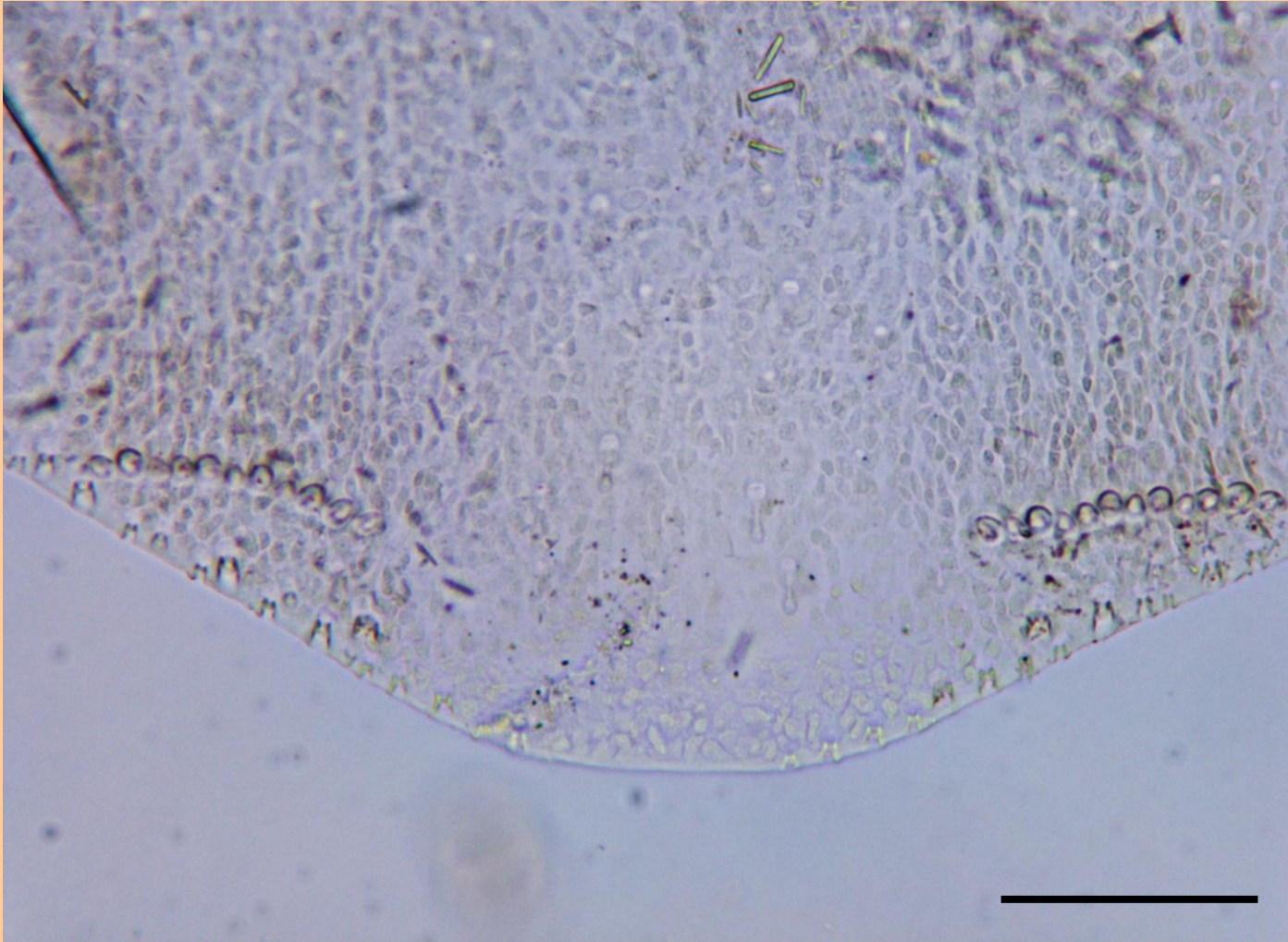
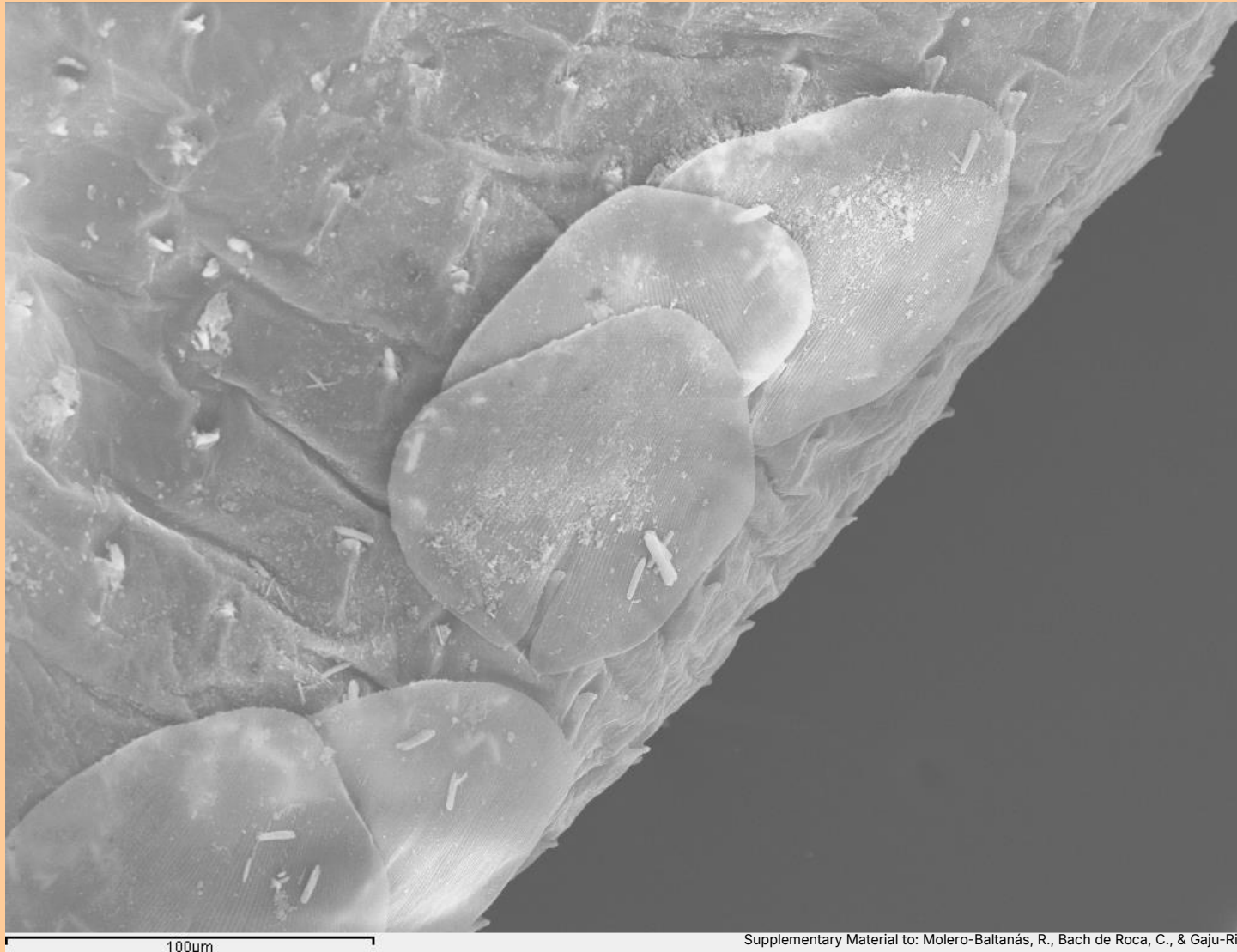


Figure S10. *Sceletolepisma howa*, SEM image of coxal scales



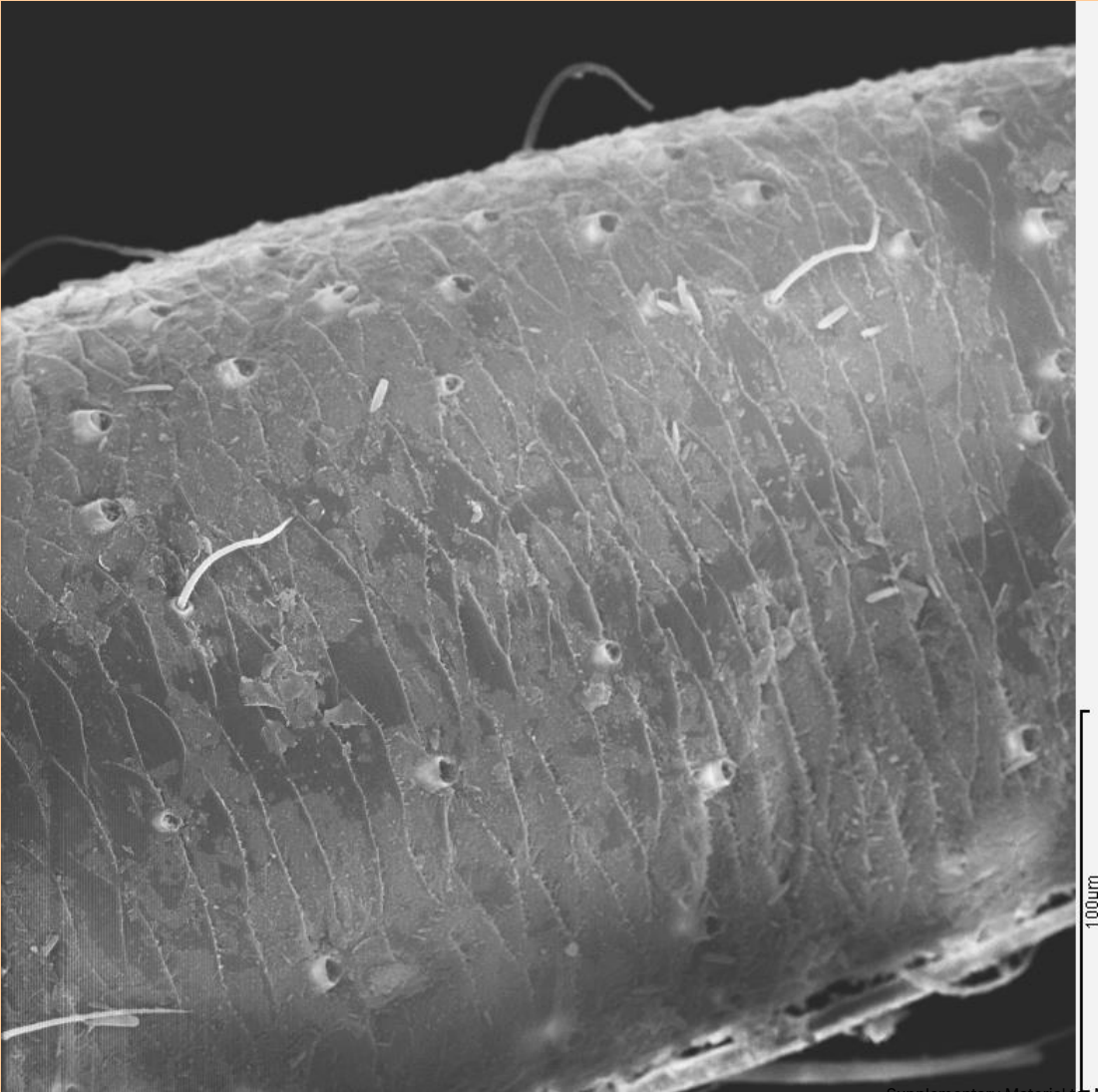
Supplementary Material to: Molero-Baltanás, R., Bach de Roca, C., & Gaju-Ricart, M. (2026).

On some species of African Ctenolepismatinae Escherich, 1905 (Zygentoma: Lepismatidae) preserved in the entomological collection of the Museum für Naturkunde der Humboldt Universität (Berlin). *Soil Organisms*, 98(SI). <https://doi.org/10.25674/464>

Figure S11. *Sceletolepisma howa*, SEM image of the inner side of the metatibia



Figure S12. *Sceletolepisma howa*, SEM image of the outer side of the metatibia



Supplementary Material to: Molero-Baltanás, R., Bach de Roca, C., & Gaju-Ricart, M. (2026). On some species of African Ctenolepismatinae Escherich, 1905 (Zygentoma: Lepismatidae) preserved in the entomological collection of the Museum für Naturkunde der Humboldt Universität (Berlin). *Soil Organisms*, 98(S1). <https://doi.org/10.25674/464>

Figure S13. *Sceletolepisma howa*, protibia. Scale: 0.2 mm



Figure S14. *Sceletolepisma howa*, mesotibia. Scale: 0.2 mm



Supplementary Material to: Molero-Baltanás, R., Bach de Roca, C., & Gaju-Ricart, M. (2026).
On some species of African Ctenolepismatinae Escherich, 1905 (Zygentoma: Lepismatidae) preserved in the entomological
collection of the Museum für Naturkunde der Humboldt Universität (Berlin). *Soil Organisms*, 98(SI). <https://doi.org/10.25674/464>

Figure S15. *Sceletolepisma howa*, SEM photograph of the pretarsal claws



70µm

Supplementary Material to: Molero-Baltanás, R., Bach de Roca, C., & Gaju-Ricart, M. (2026). On some species of African Ctenolepismatinae Escherich, 1905 (Zygentoma: Lepismatidae) preserved in the entomological collection of the Museum für Naturkunde der Humboldt Universität (Berlin). *Soil Organisms*, 98(SI). <https://doi.org/10.25674/464>

Figure S16. *Sceletolepisma howa*, micrograph of the median comb of macrochaetae on the hind margin of the urosternite II (only insertions can be observed). Scale bar: 0.1 mm

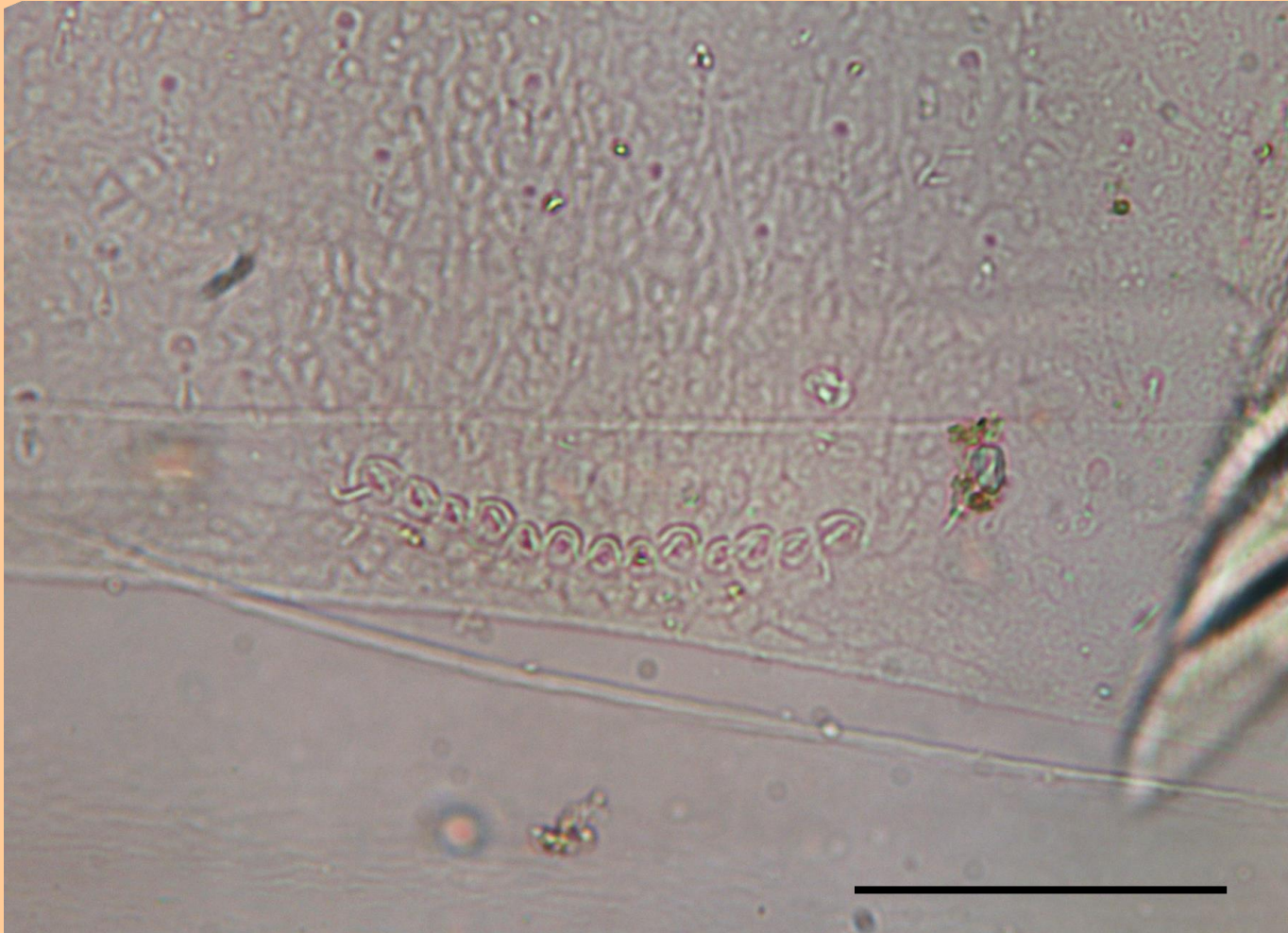


Figure S17. *Sceletolepisma howa*, micrograph of the coxite VIII, showing the insertion of the stylus marked with a yellow arrow, and the comb of macrochaetae marked with a red arrow (only insertions visible). Scale bar: 0.1 mm

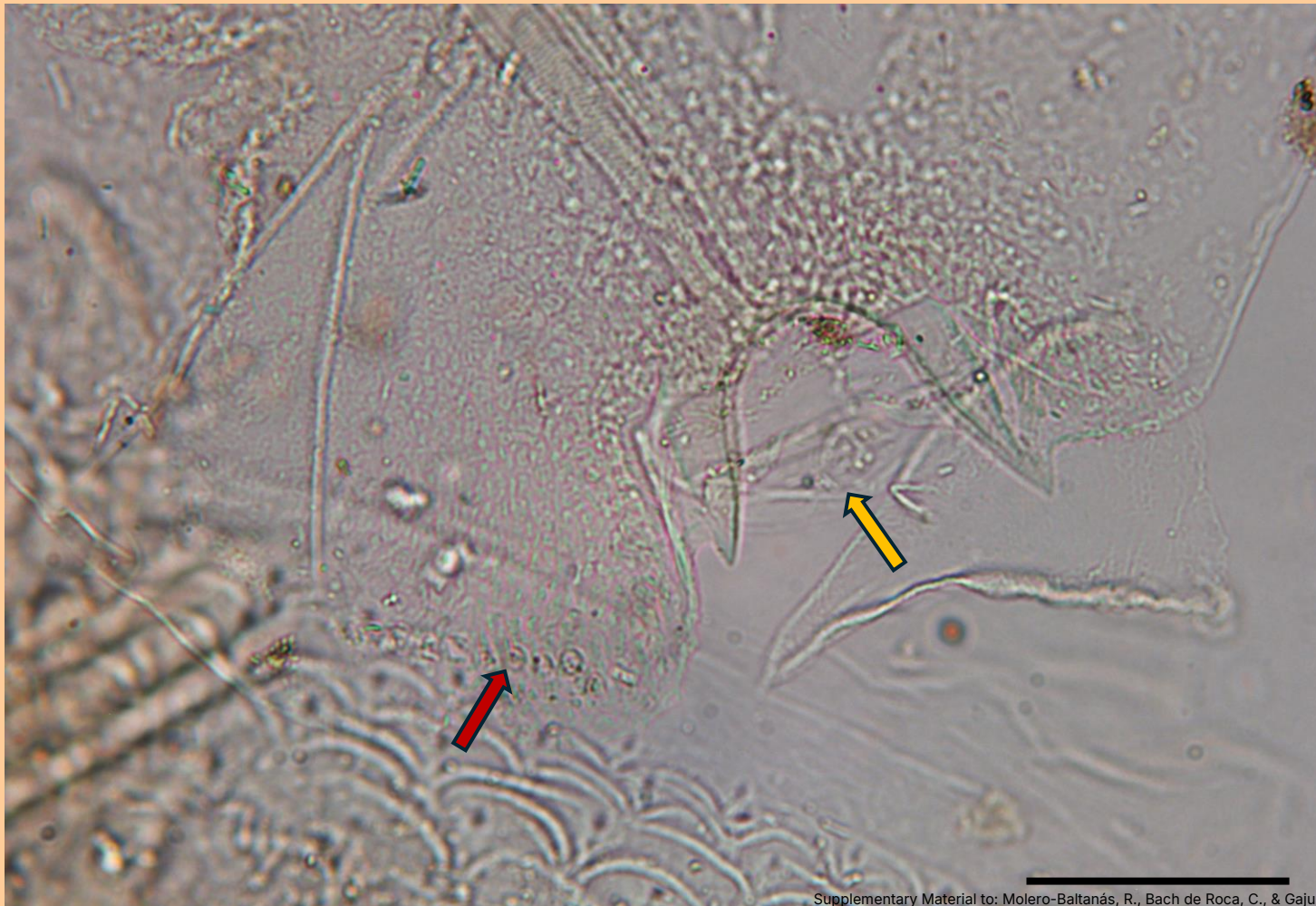


Figure S18. *Sceletolepisma howa*, image of the proventricular teeth obtained merging three micrographs. Scale: 0.1 mm

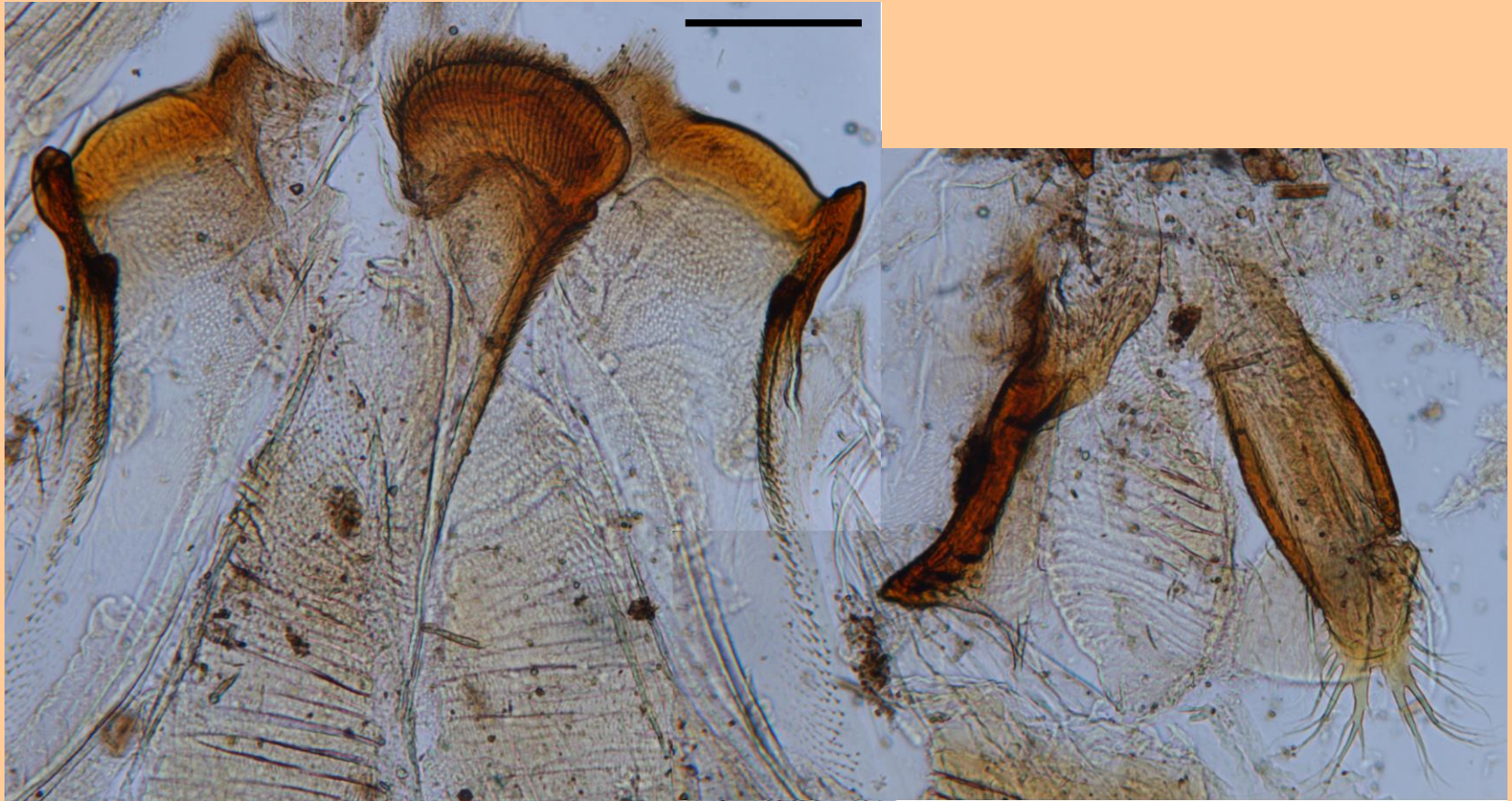


Figure S19. *Sceletolepisma corvinum*, SEM image of the inner side of the first leg (femur and tibia). Scale: 0.1 mm

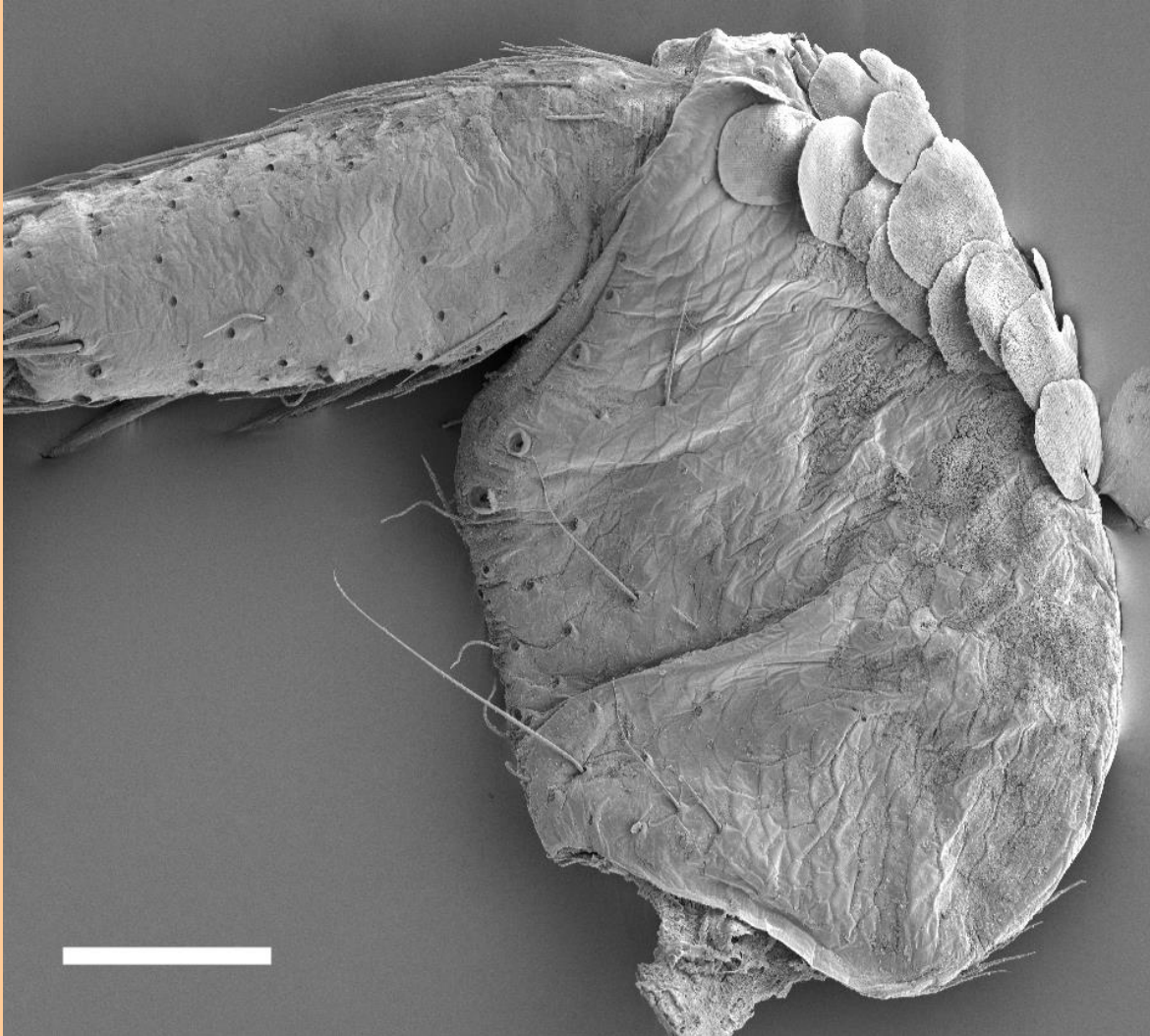


Figure S20. *Sceletolepisma corvinum*, SEM image of the outer side of a second leg (fémur, apex of coxa, base of tibia). Scale: 0.1 mm

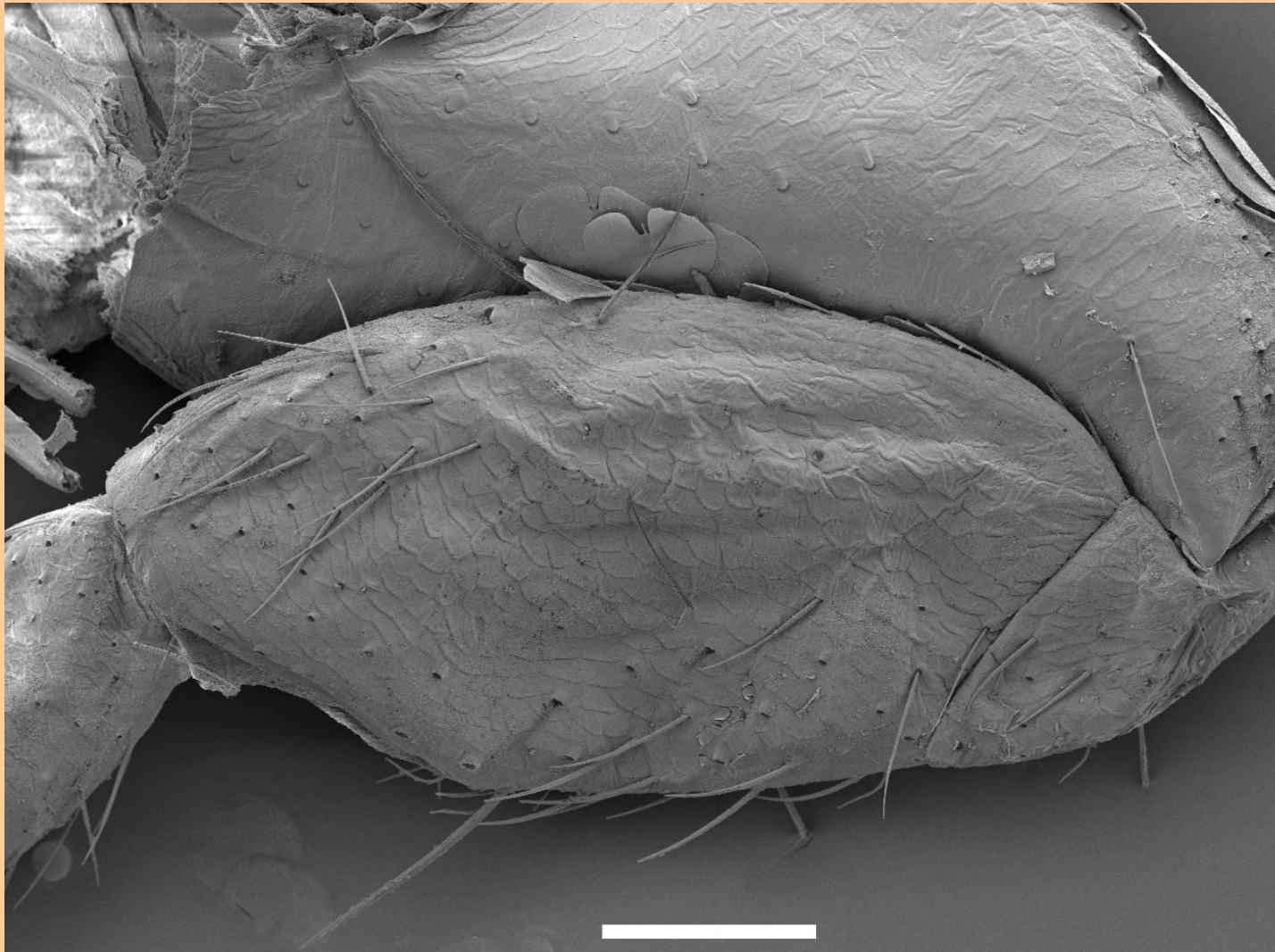


Figure S21. *Sceletolepisma parcespinatum*, SEM photograph of the inner side of a tibia

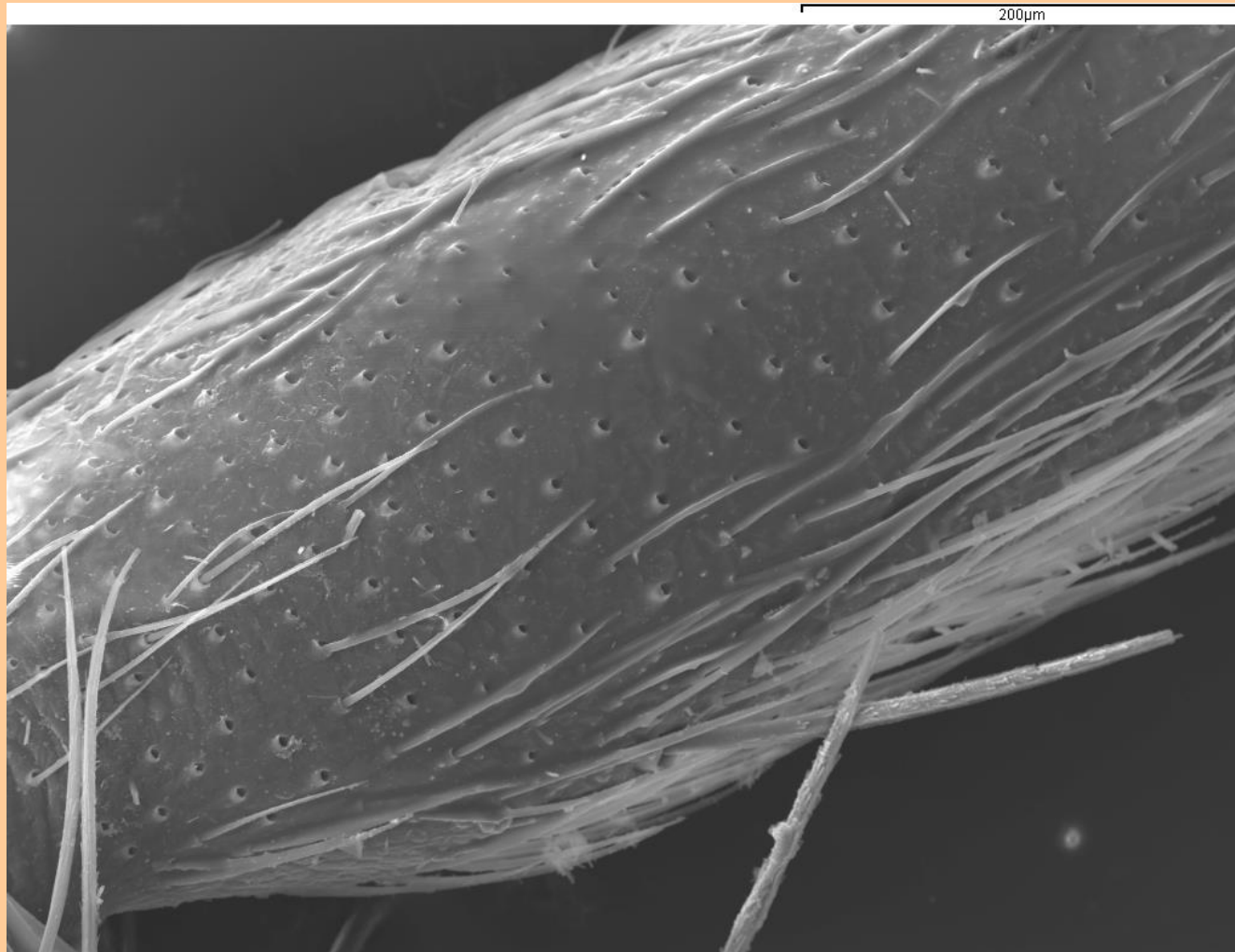


Figure S22. *Sceletolepisma parcespinatum*, SEM image of the inner side of femur showing rounded orbicular scales with thin ribs

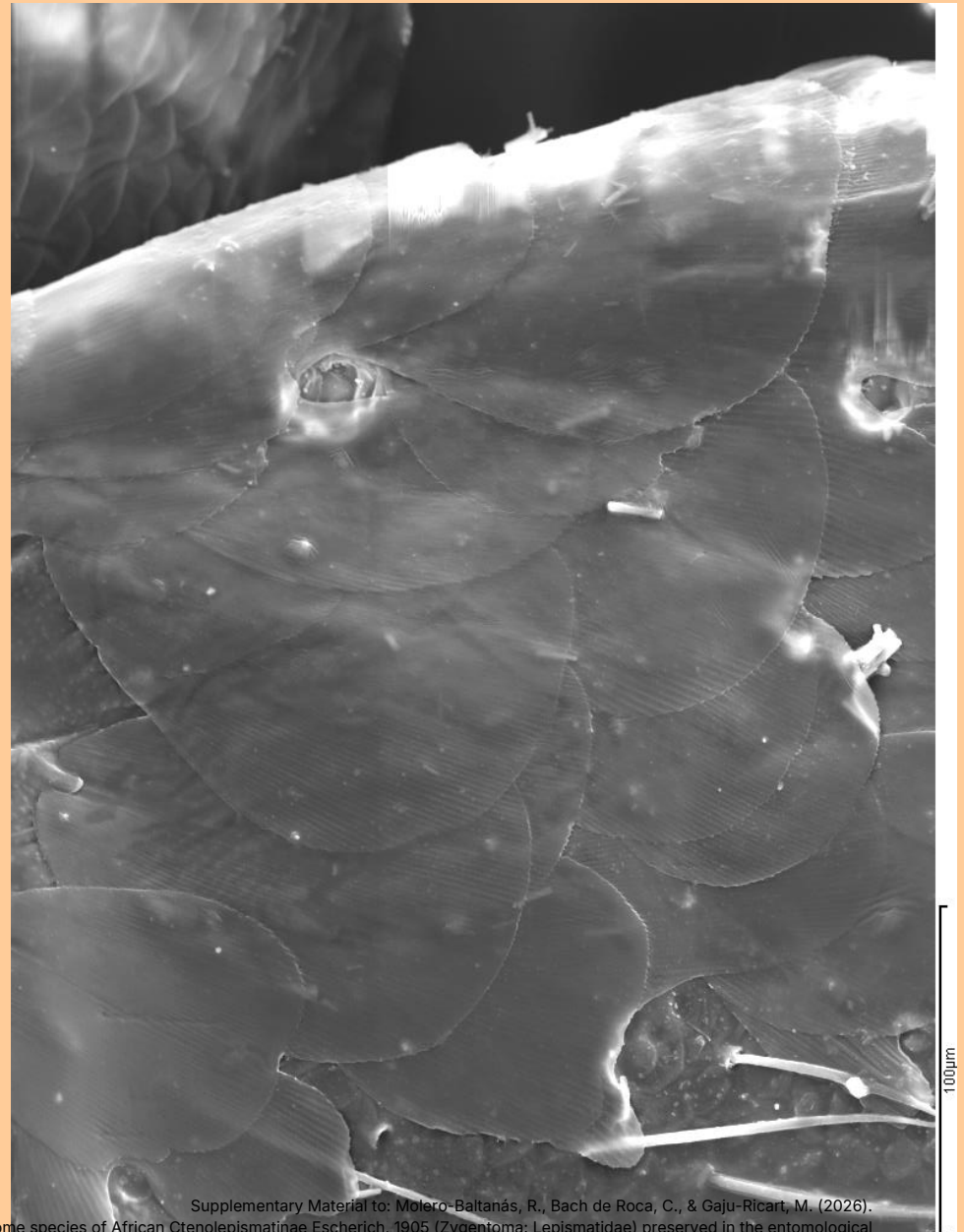


Figure S23. *Sceletolepisma parcespinatum*, SEM image of the surface of antennal scapus, showing insertions of scales

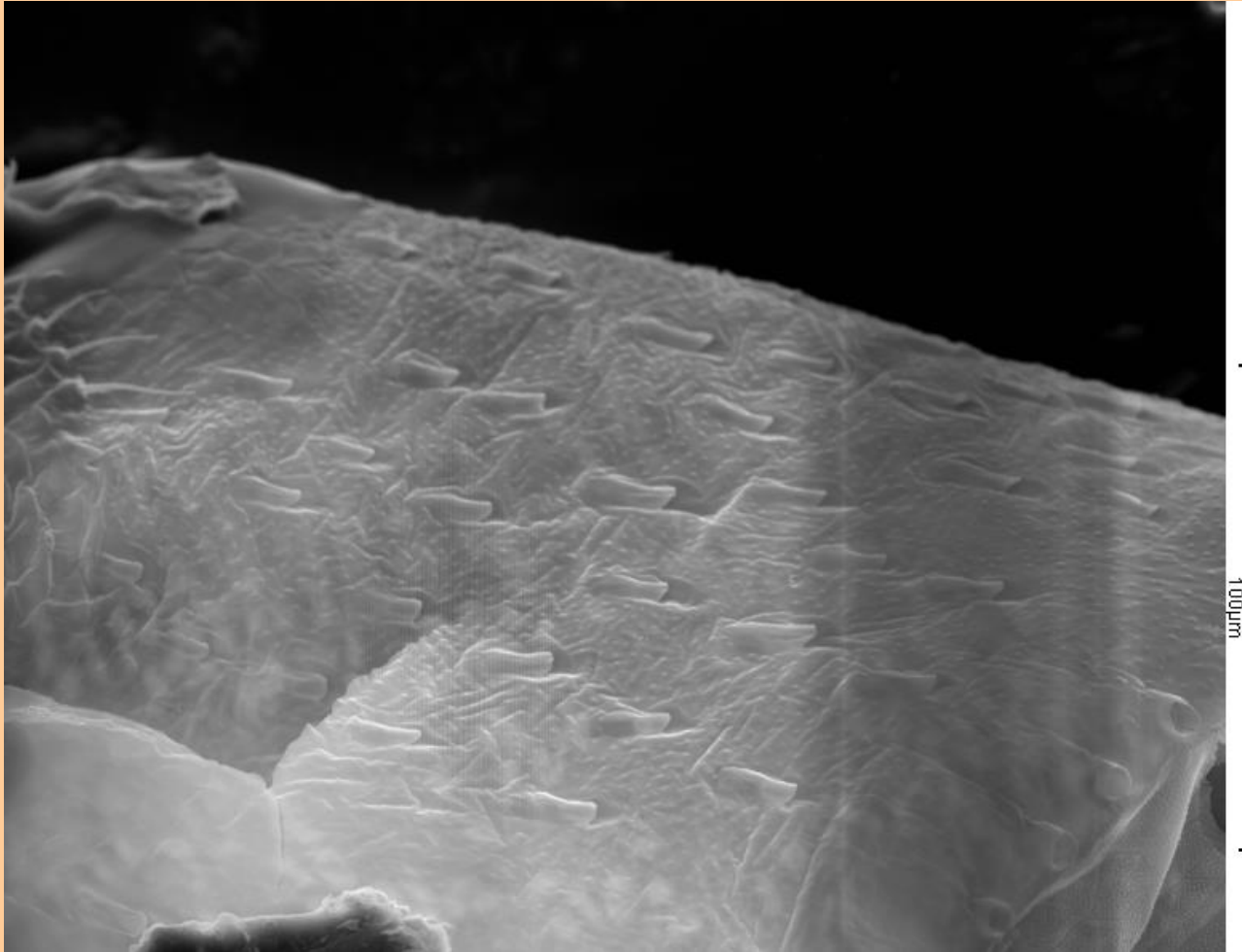


Figure S24. *Sceletolepisma parcespinatum*, SEM image of the antennal pedicel and the first annulus of the flagellum, showing setae and their insertions (scales are absent)



Figure S25, *Sceletolepisma parcespinatum*, SEM image of a section of the antennal flagellum (obtained merging two photographs) showing several annuli with sencilla. Explanation of the types on sensilla on next slide.

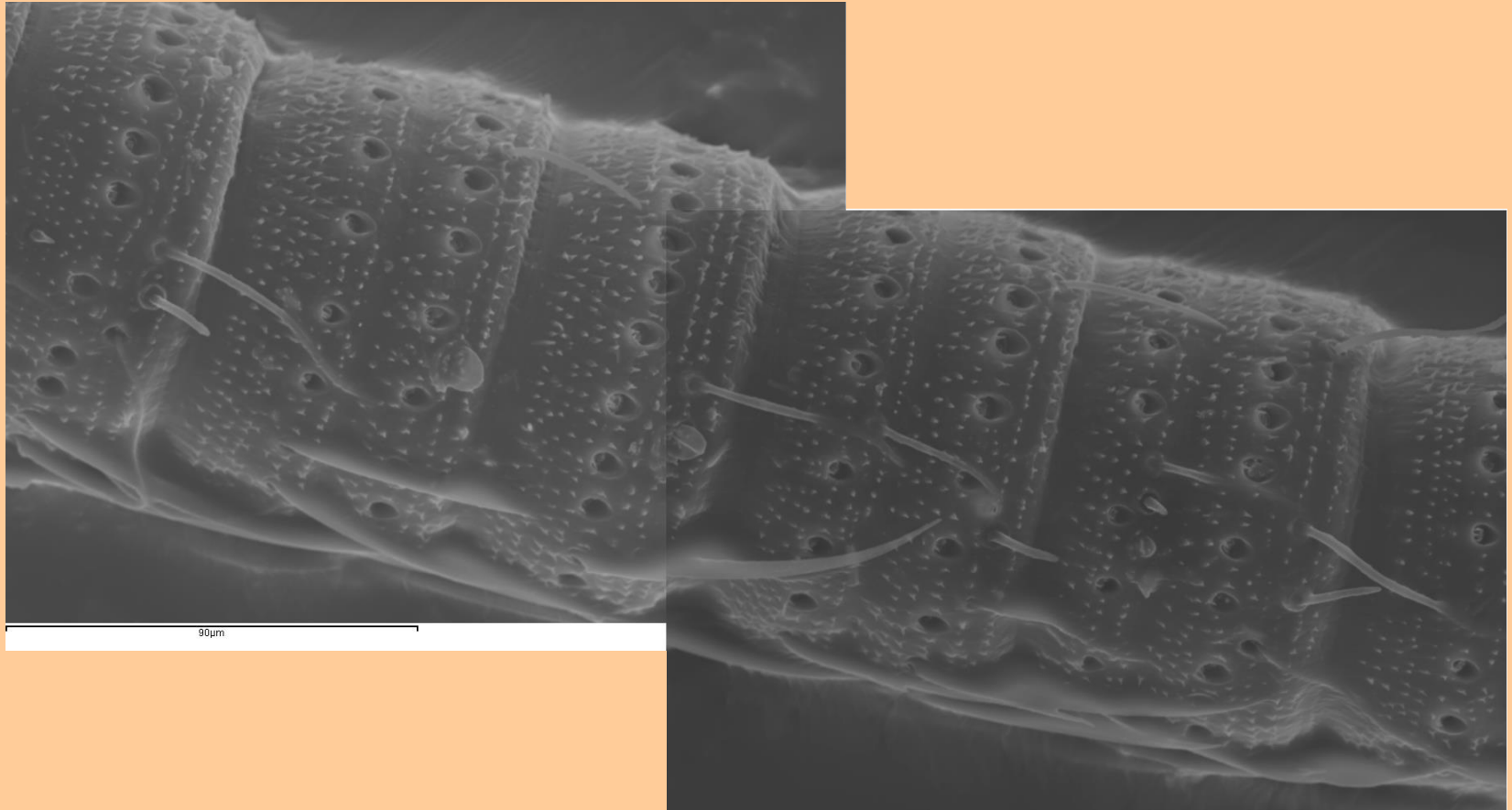


Figure S25, explanation of types of sensilla observed: bA, basiconic Type A; bB, basiconic Type B; bC, basiconic Type C; X: insertion of a chaetic sensillum; K: chaetic sensillum; co: coeloconic sensillum; t: trichoid sensillum.

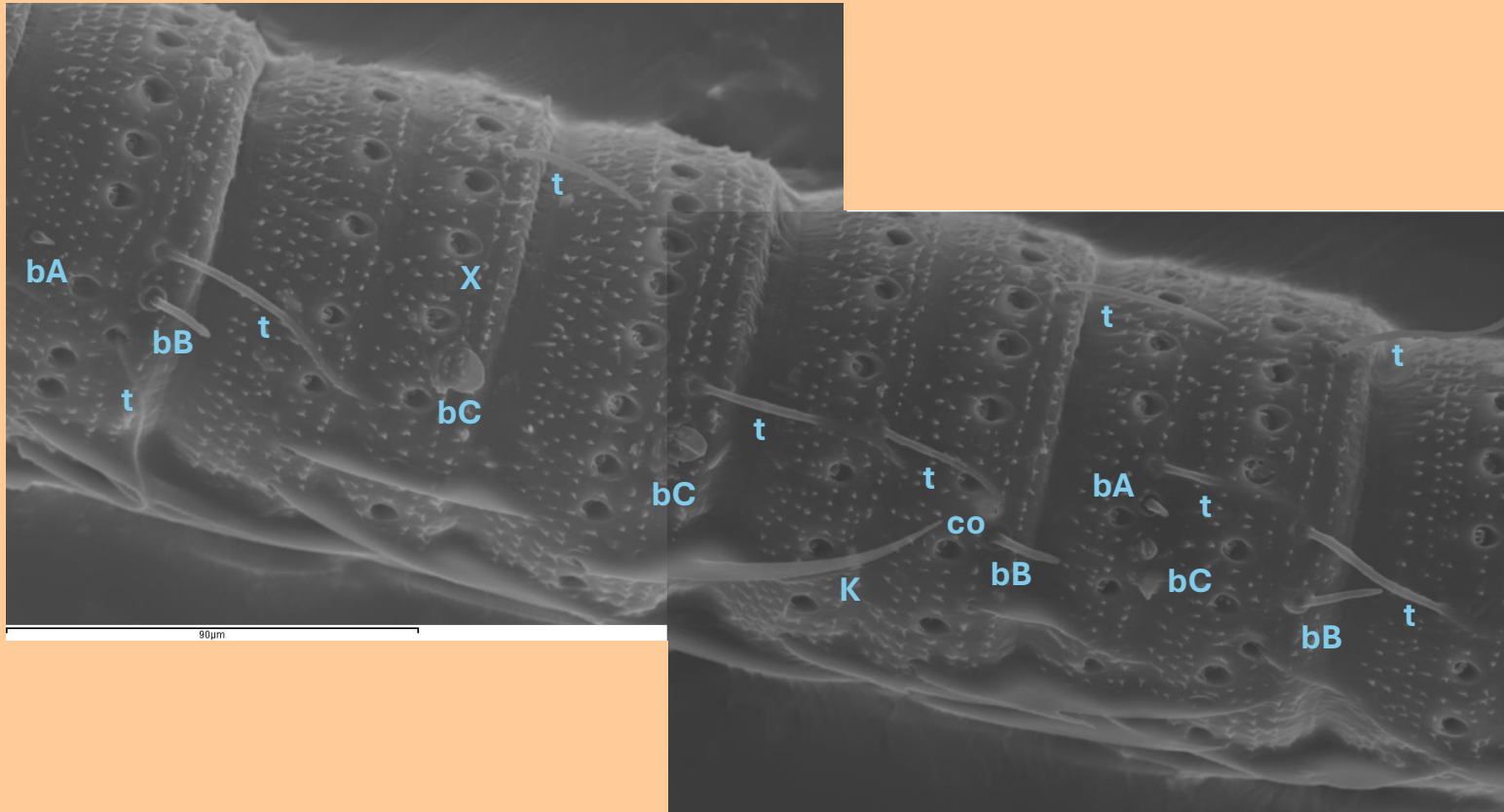


Figure S26: *Sceletolepisma parcespinatum*, SEM image of the apical article of the labial palp, showing five sensory papillae arranged in a row

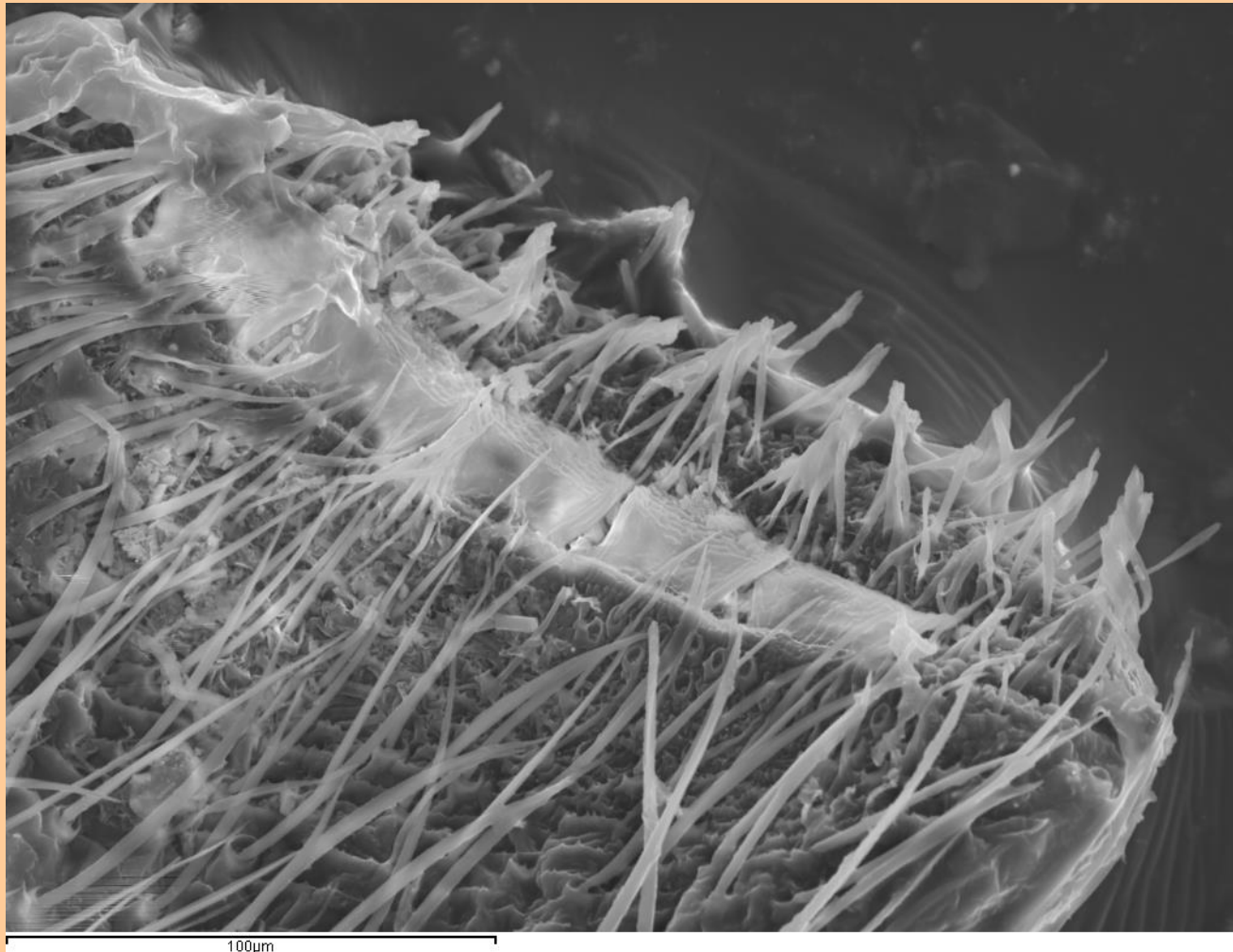


Figure S27: *Sceletolepisma terebrans*, scape covered with scales (A) and pedicel lacking scales (B). Feathered macrochaetae of cephalic tufts can also be observed

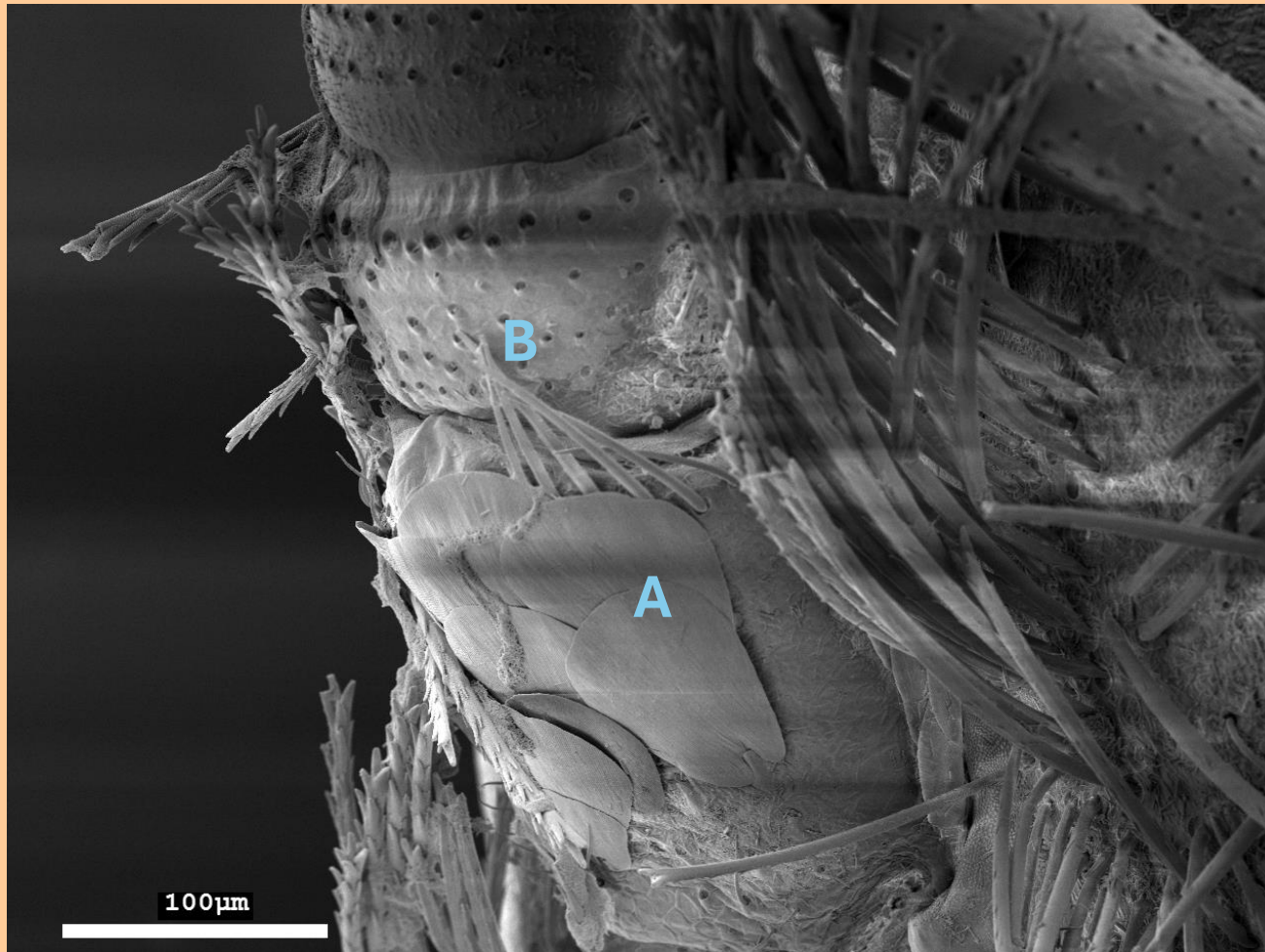


Figure S28: *Sceletolepisma terebrans*, SEM photograph of some annuli of the antennal flagellum showing some trichoid sensilla (t1, t2), one basiconic sensillum Type B (bB) some basiconic sensilla Type C (bC1, bc2), one coeloconic sensillum (co) and insertions of chaetic sensilla (one example marked with X). Scale bar: 20 μ m

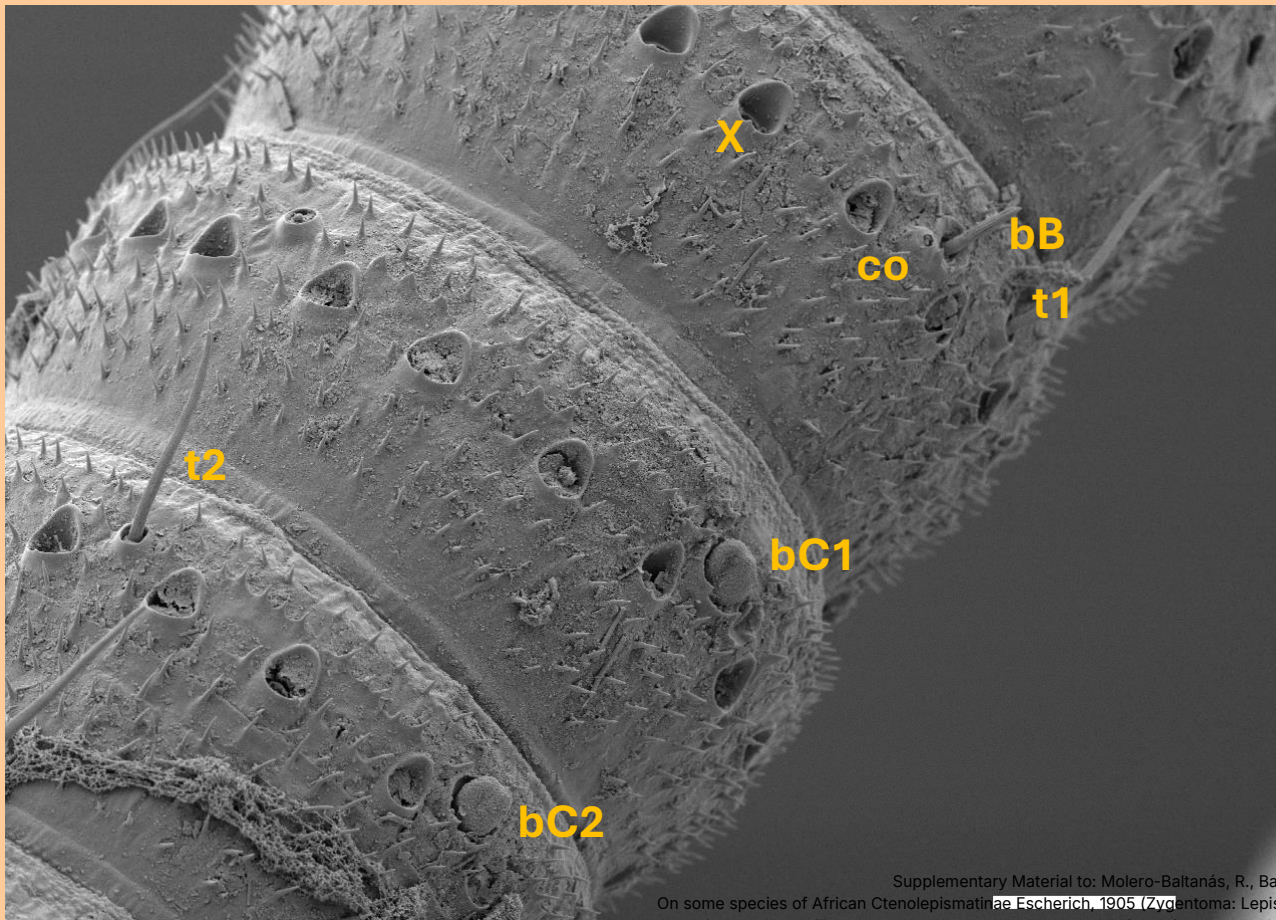


Figure S29: *Sceletolepisma terebrans*, SEM photograph of the coeloconic sensillum and the basiconic B sensillum marked in previous Figure 28, with higher magnification. Both sensilla are on the central part of the photograph and the base of trichoid sensillum t1 marked in the aforementioned figure is visible on the right part. Scale bar: 2 μm



Figure S30: *Sceletolepisma terebrans*, SEM photograph of the basiconic C sensillum marked as bC2 in previous Figure 28, with higher magnification. Scale bar: 2 μm

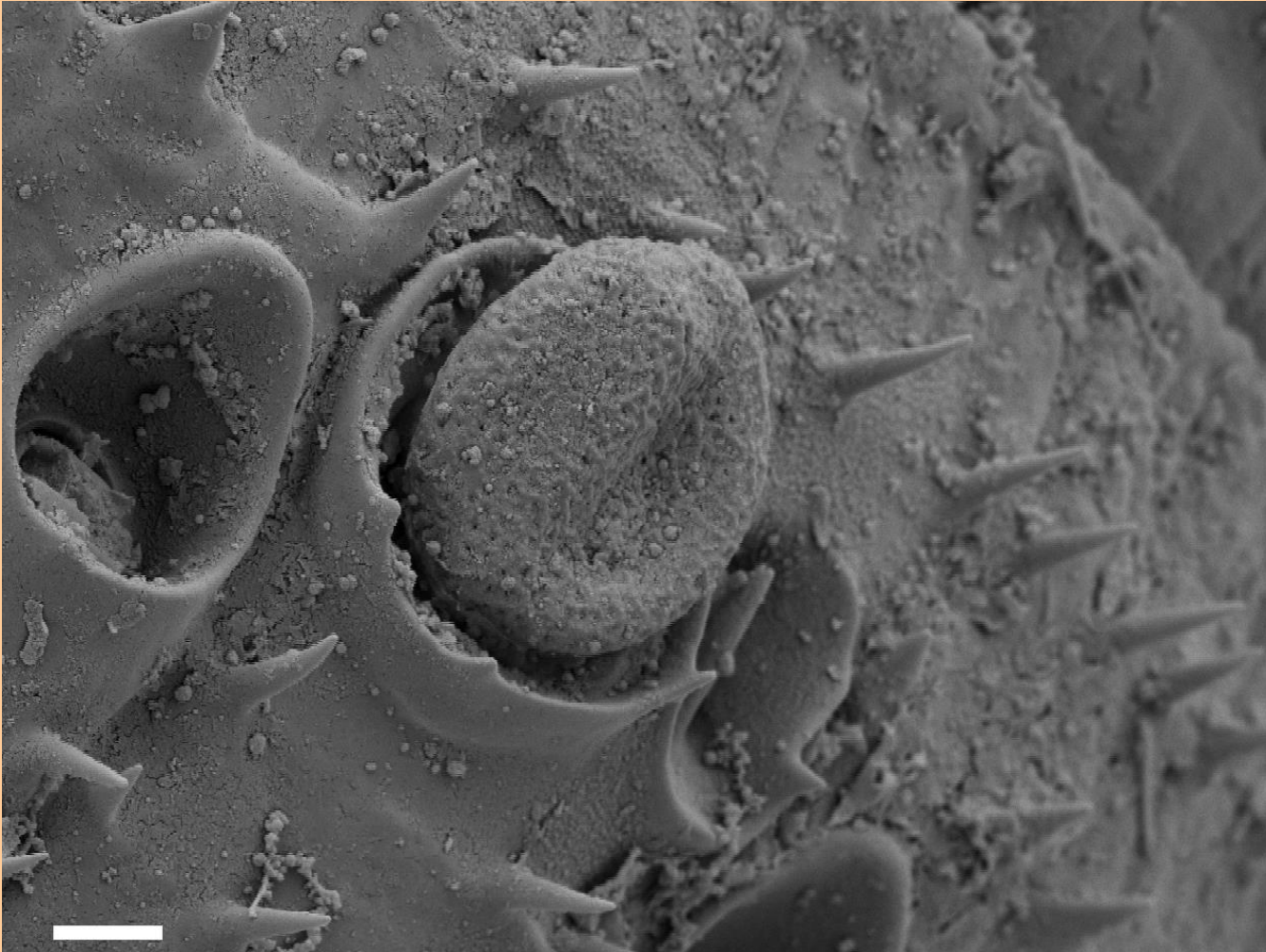


Figure S31: *Sceletolepisma terebrans*, SEM photograph of three long trichoid sensilla and one short basiconic sensillum Type B inserted on the distal part of an annulus of the antennal flagellum. Scale bar: 10 μ m

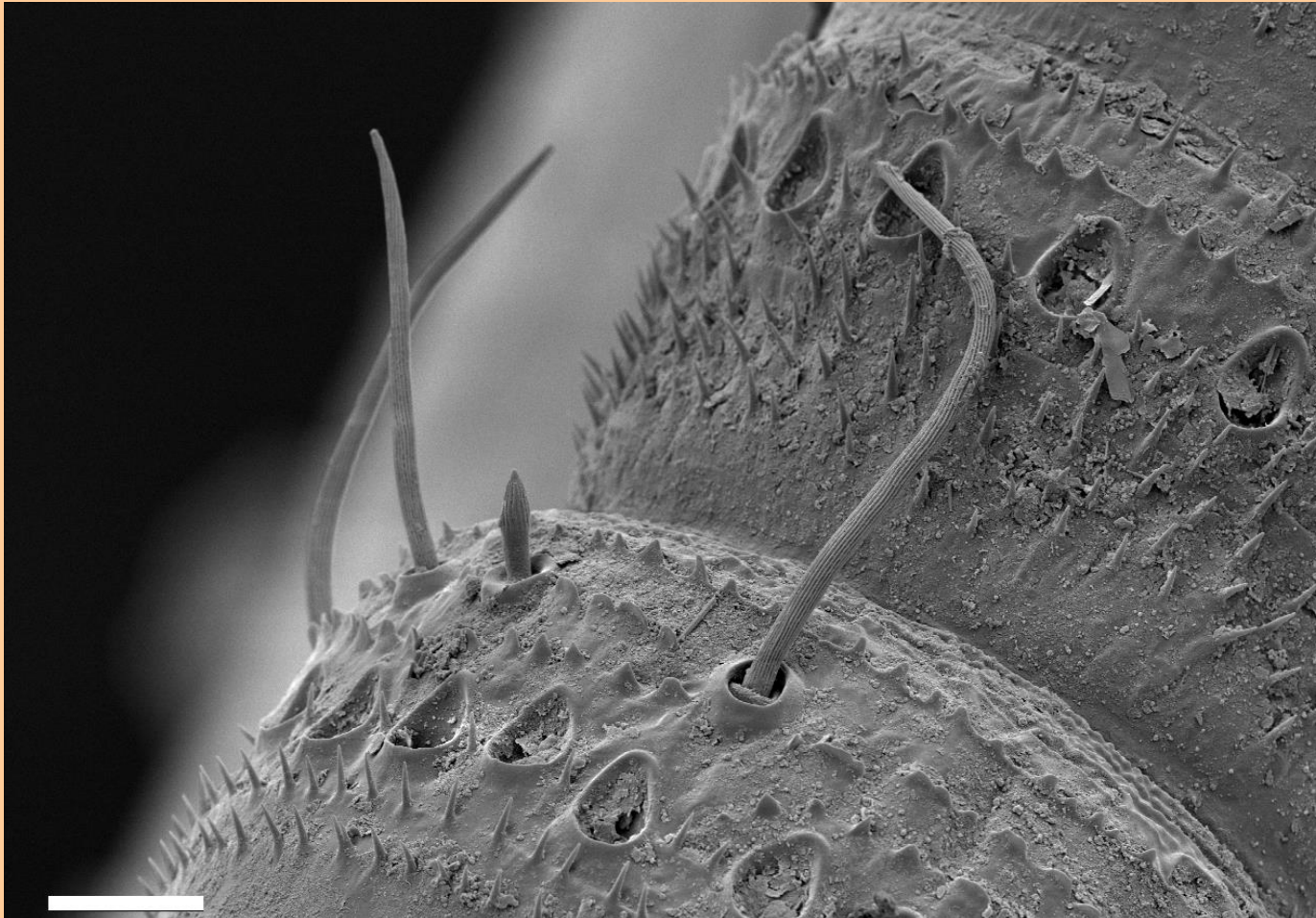


Figure S32: *Sceletolepisma terebrans*, SEM photograph of the labial palp, showing the five apical papillae arranged in a single row, and some basiconic sensilla on the left part of the apical article (see a magnification of these sensilla in Figure S33). Scale bar: 0.1 mm



Figure S33:
Sceletolepisma
terebrans, SEM
photograph of one
basiconic sensillum Type
C (bC) and two basiconic
sensilla Type B (bB)
inserted, among several
trichoid sensilla, on the
outer side of apical article
of the labial palp. Scale
bar: 10 μm

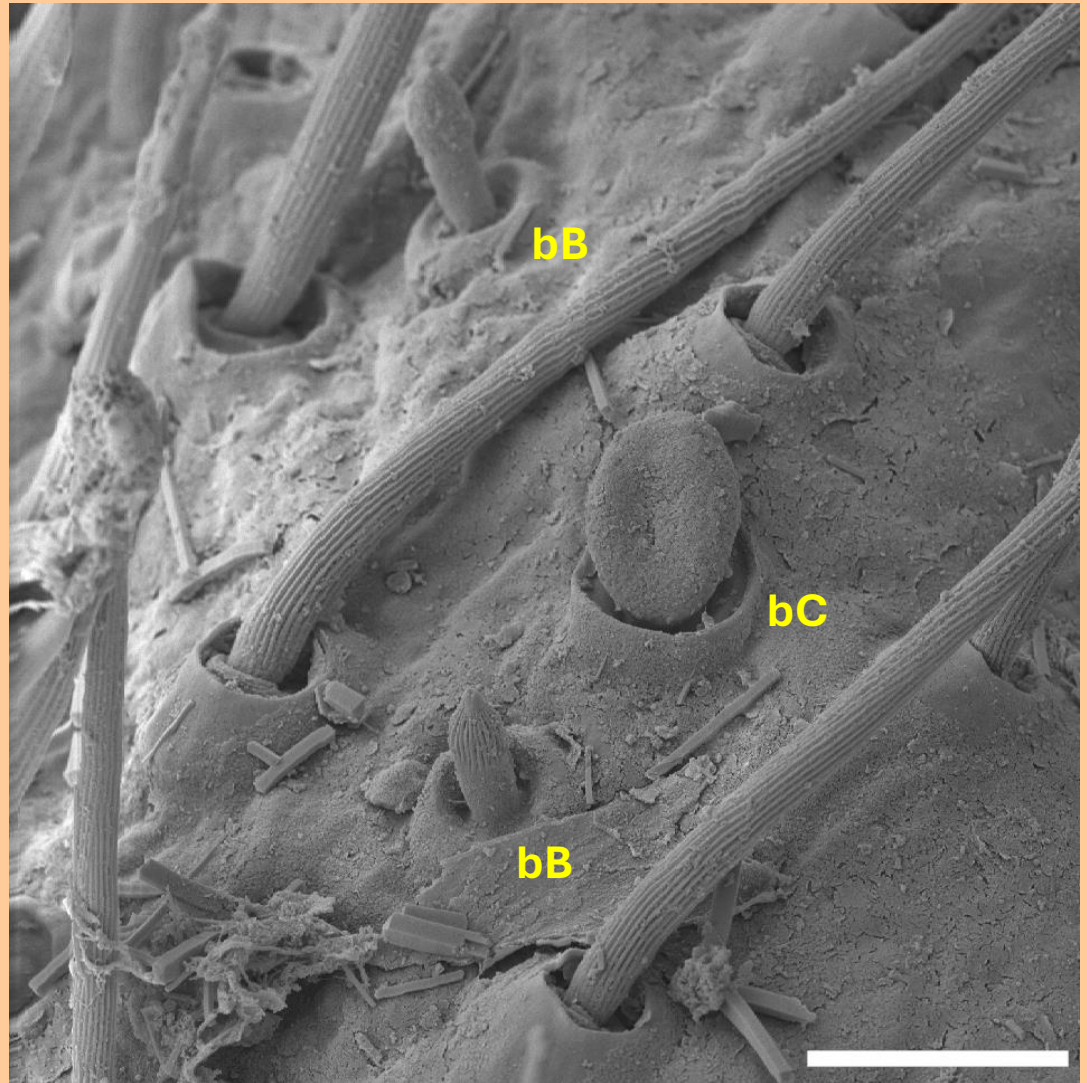


Figure S34: *Sceletolepisma terebrans*, SEM photograph of the surface of the anterolateral part of the pronotum, showing the insertions of macrochaetae of the most anterior lateral combs, and some scales with heterogeneous shape and density of ribs. Scale: 20 μm

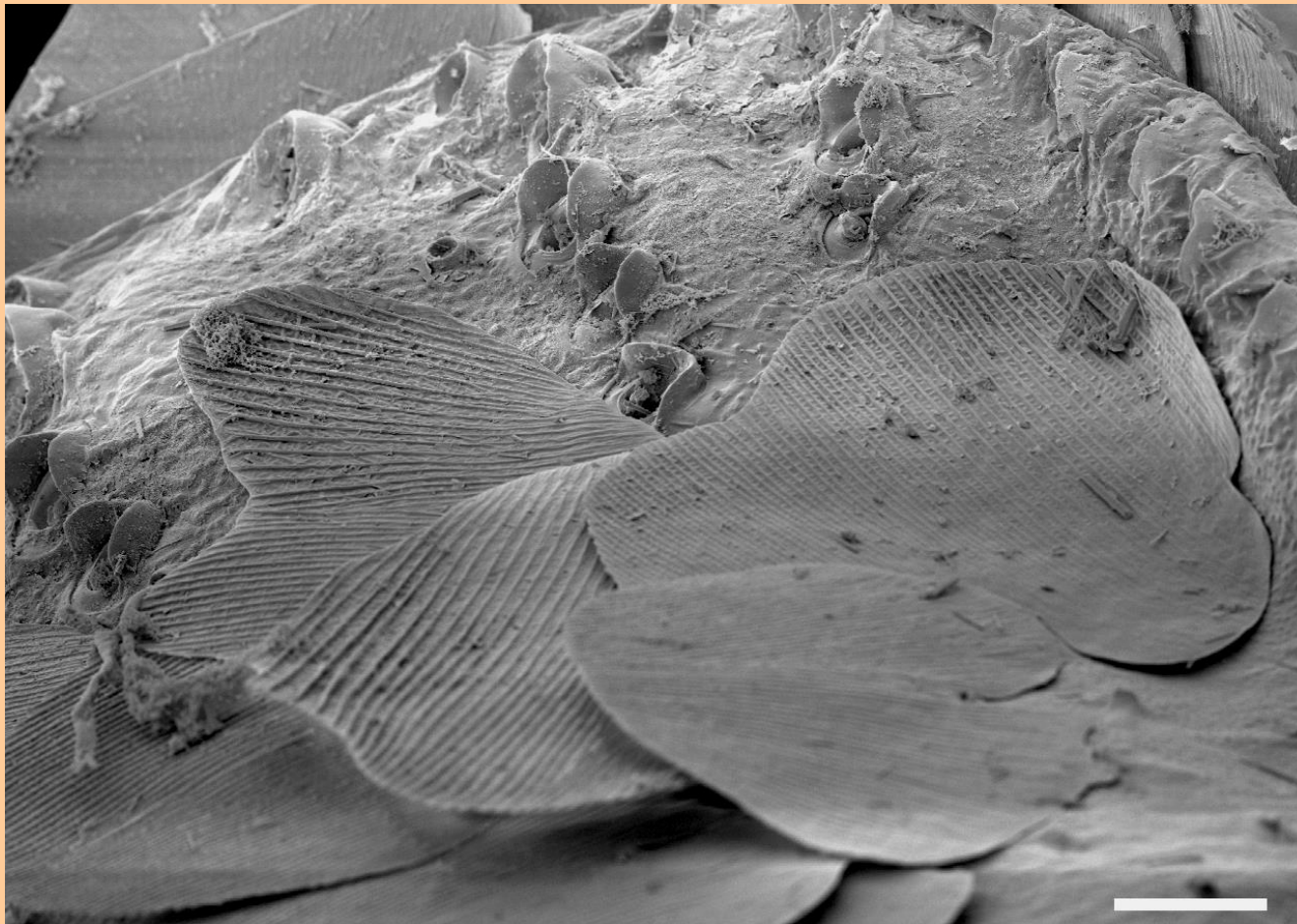


Figure S35: *Sceletolepisma terebrans*, SEM photograph of the outer (dorsal) side of femur and tibia of the first leg, showing rounded scales on femur. The lateral margin and the posterior comb of pronotum can be seen on the right part of the image. Scale bar: 0.1 mm

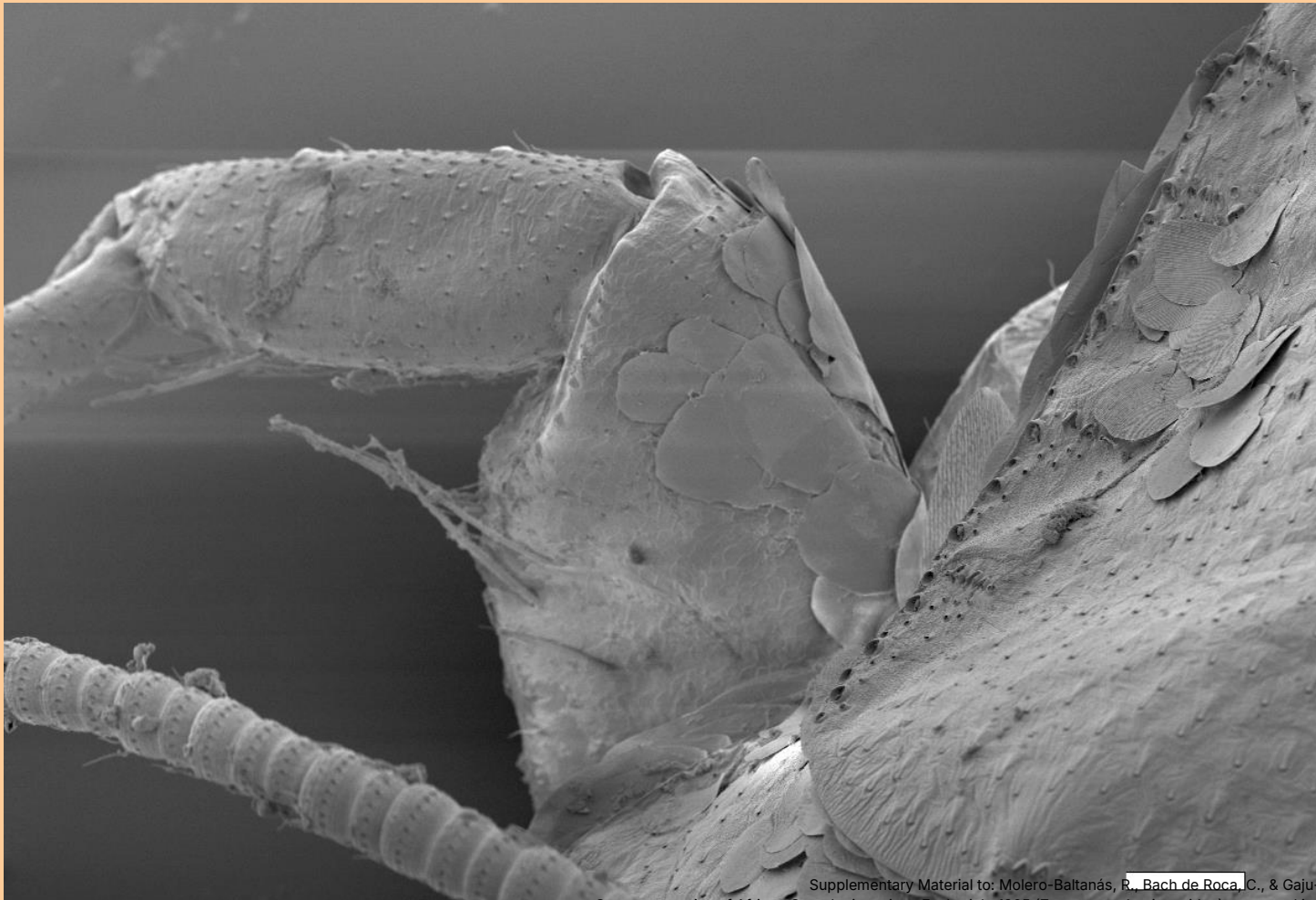
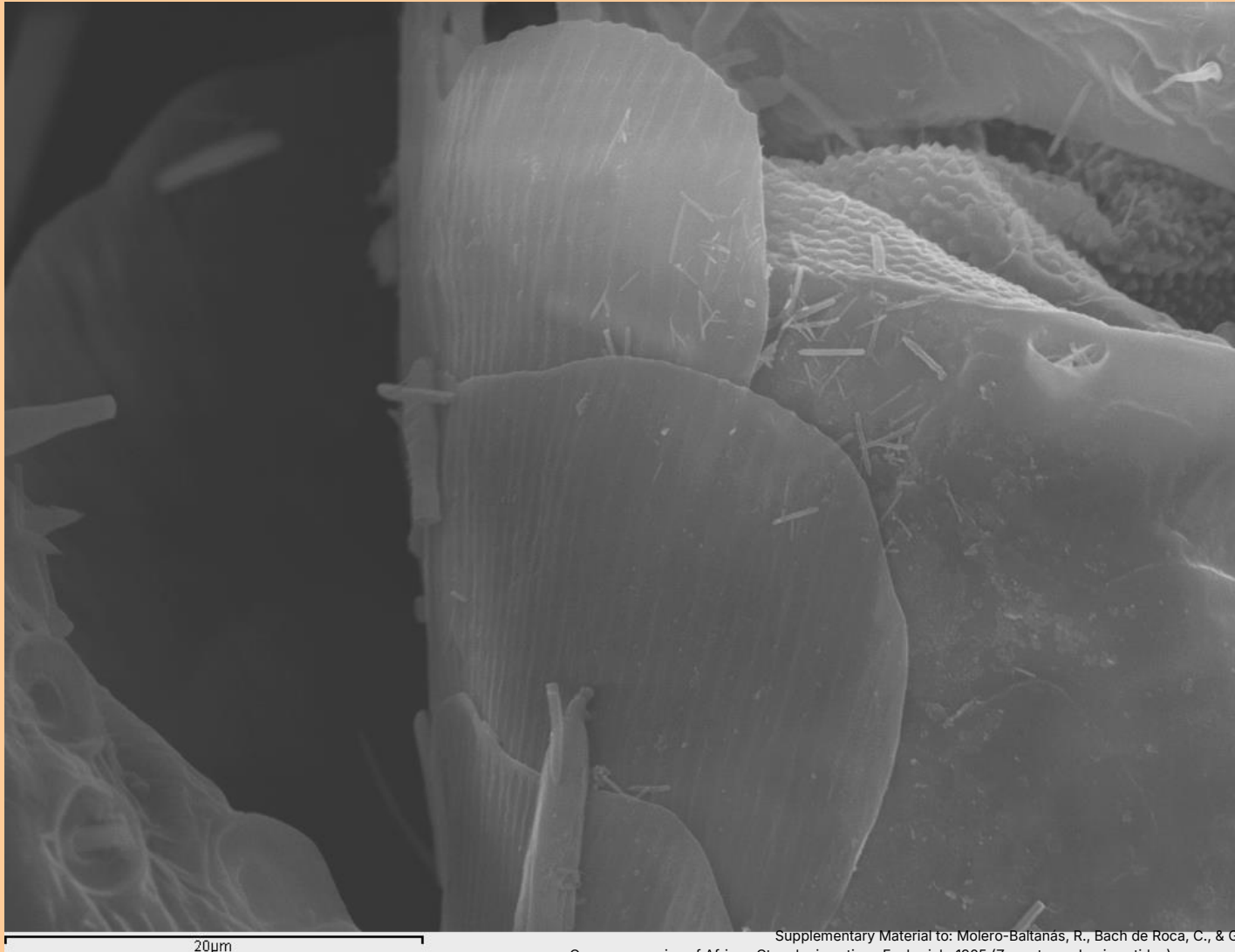


Figure S36: *Psammolepisma schultzei*, SEM photograph of rounded scales of the scapus



Supplementary Material to: Molero-Baltanas, R., Bach de Roca, C., & Gaju-Ricart, M. (2026).

On some species of African Ctenolepismatinae Escherich, 1905 (Zygentoma: Lepismatidae) preserved in the entomological collection of the Museum für Naturkunde der Humboldt Universität (Berlin). *Soil Organisms*, 98(SI). <https://doi.org/10.25674/464>

Figure S37: *Psammolepisma schultzei*, femur and tibia of the second leg. On the dorsal (inner) part of the femur some rounded scales can be seen, and some long trichoid sensilla are inserted on some parts of both articles

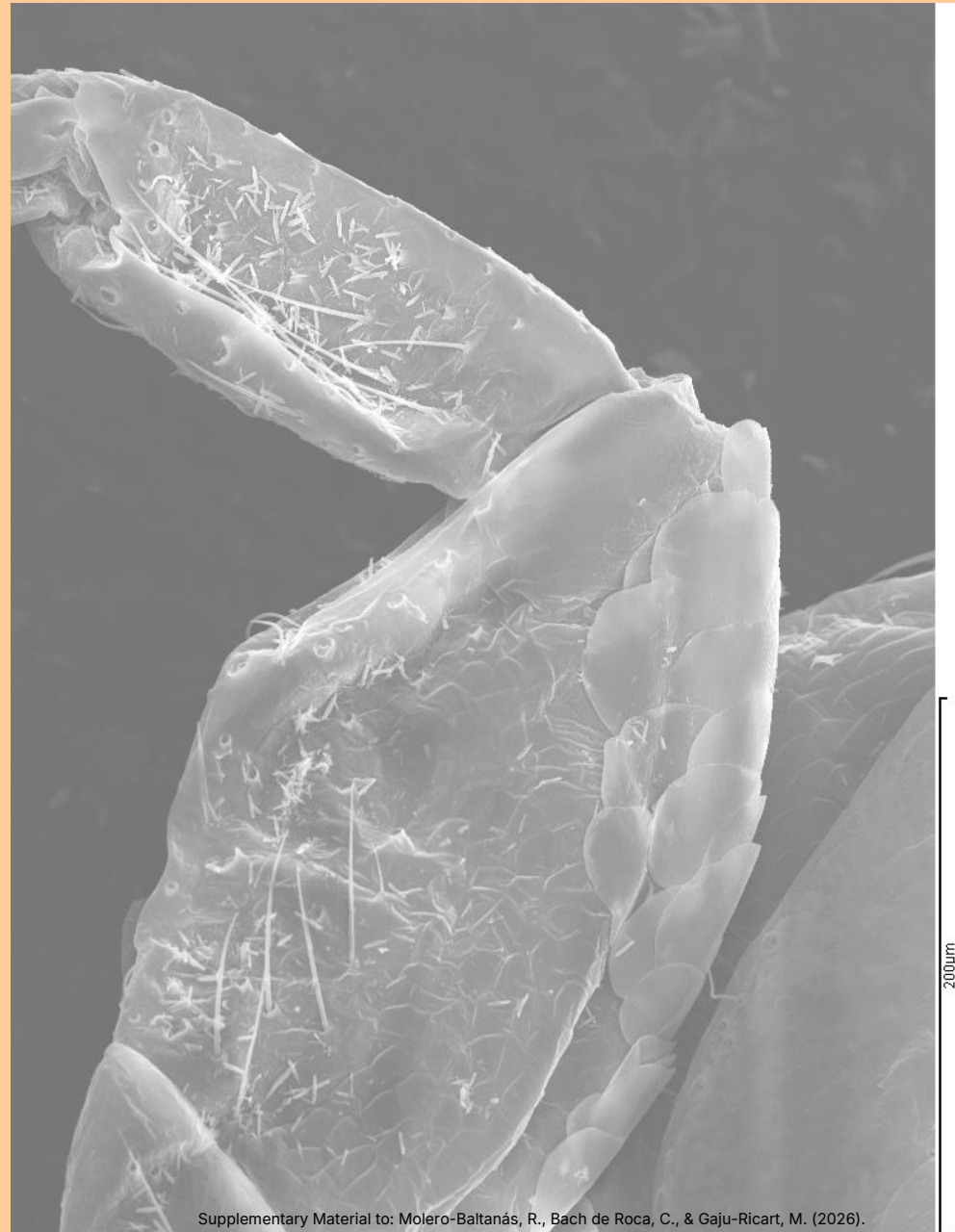
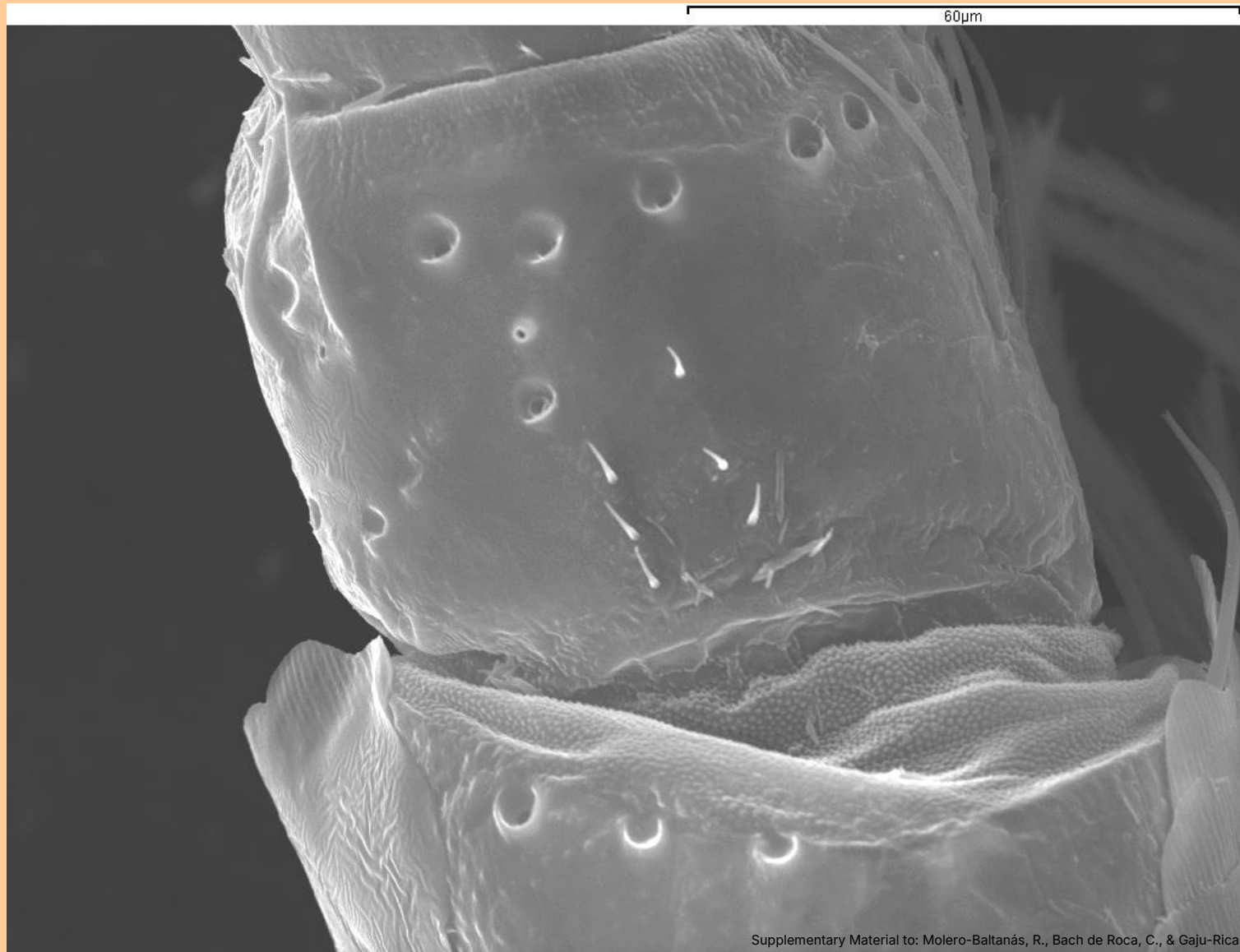


Figure S38. *Psammolepisma schultzei*, pedicel of antenna



Supplementary Material to: Molero-Baltanás, R., Bach de Roca, C., & Gaju-Ricart, M. (2026). On some species of African Ctenolepismatinae Escherich, 1905 (Zygentoma: Lepismatidae) preserved in the entomological collection of the Museum für Naturkunde der Humboldt Universität (Berlin). *Soil Organisms*, 98(SI). <https://doi.org/10.25674/464>

Figure S39. *Psammolepisma schultzei*, SEM photograph of some annuli of the antennal flagellum, where some long trichoid sensilla resembling trichobothria are visible.

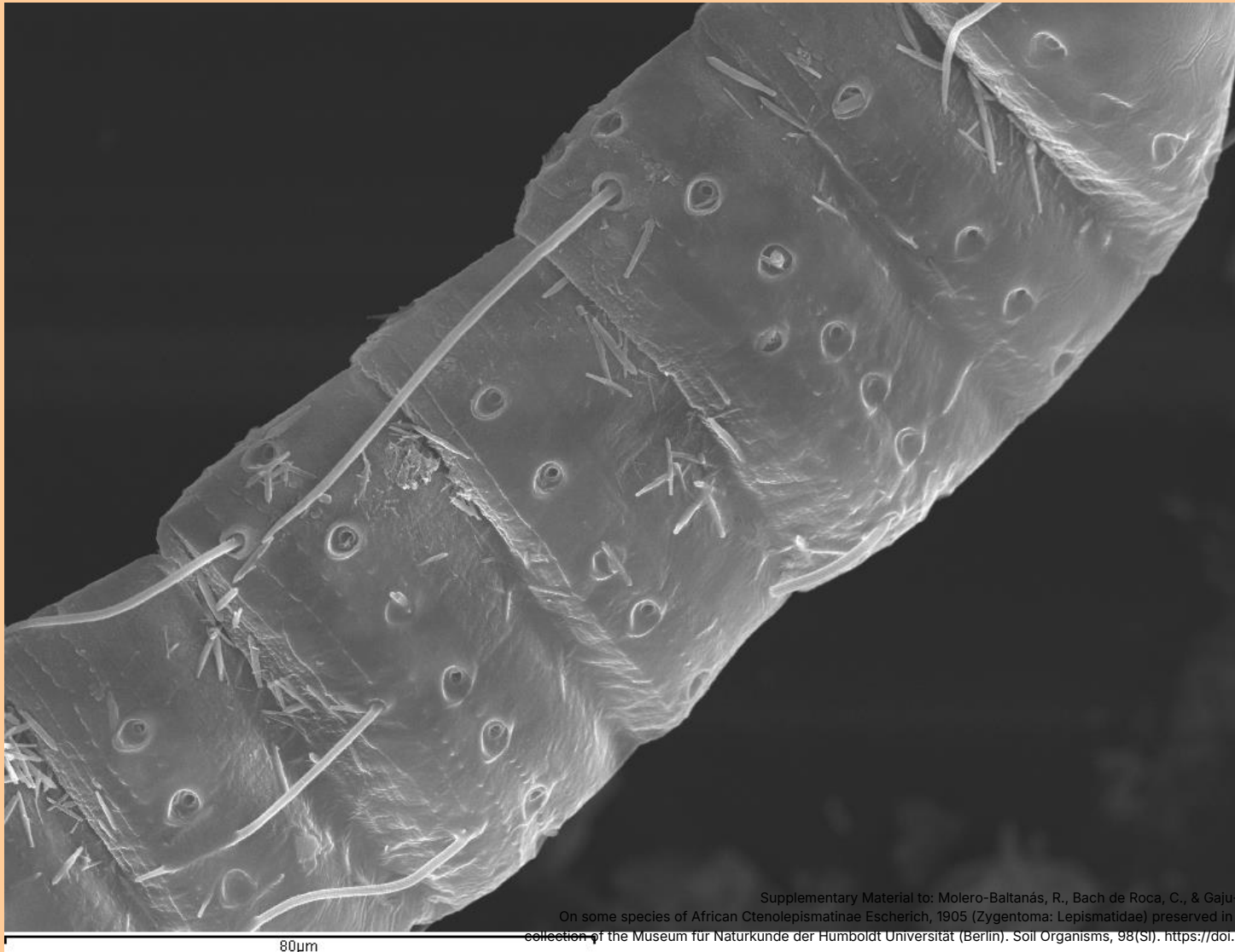
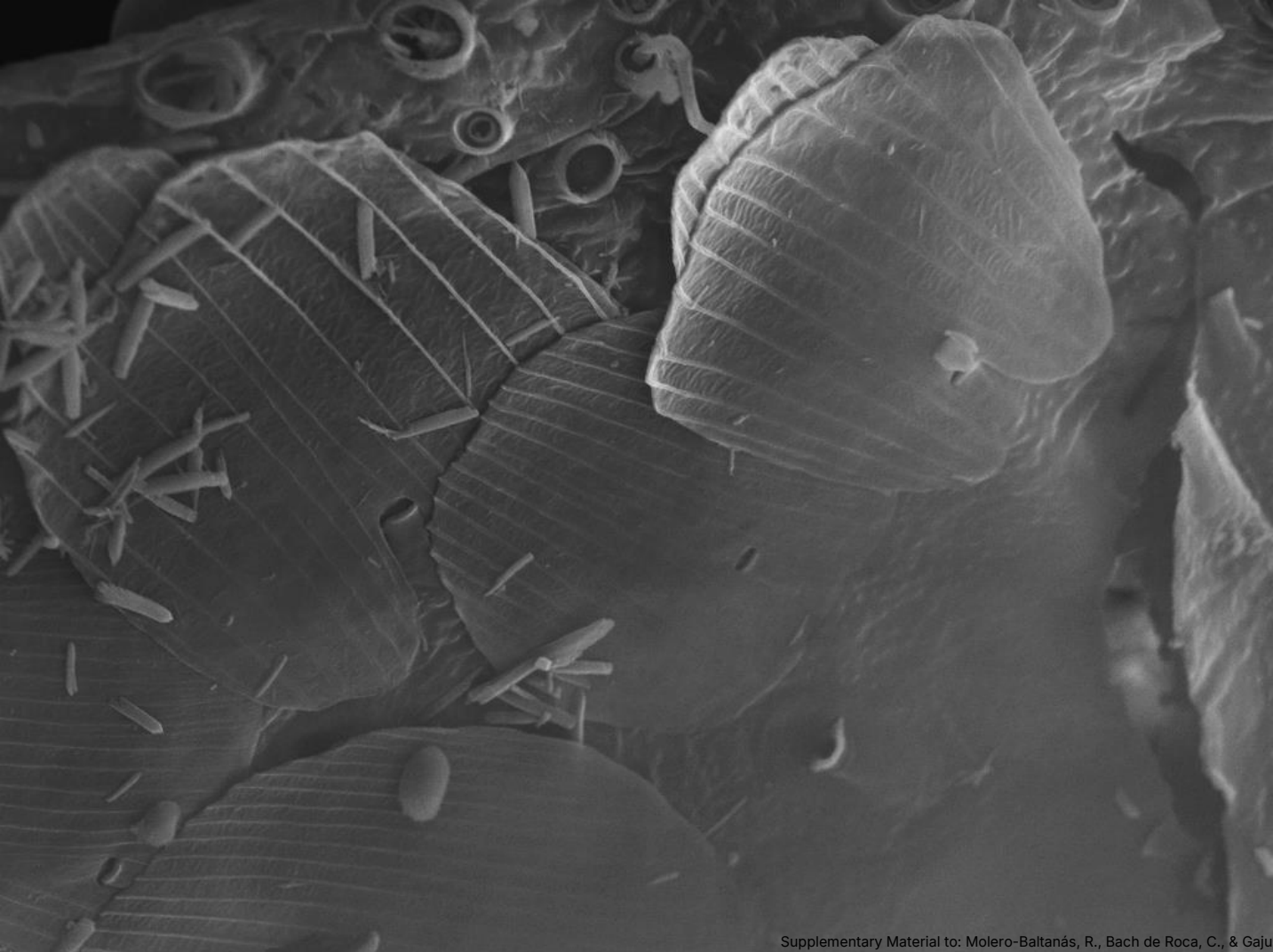


Figure S40: *Psammolepisma schultzei*, SEM image of scales on anterolateral part of pronotum, orbicular and with widely spaced ribs



50µm